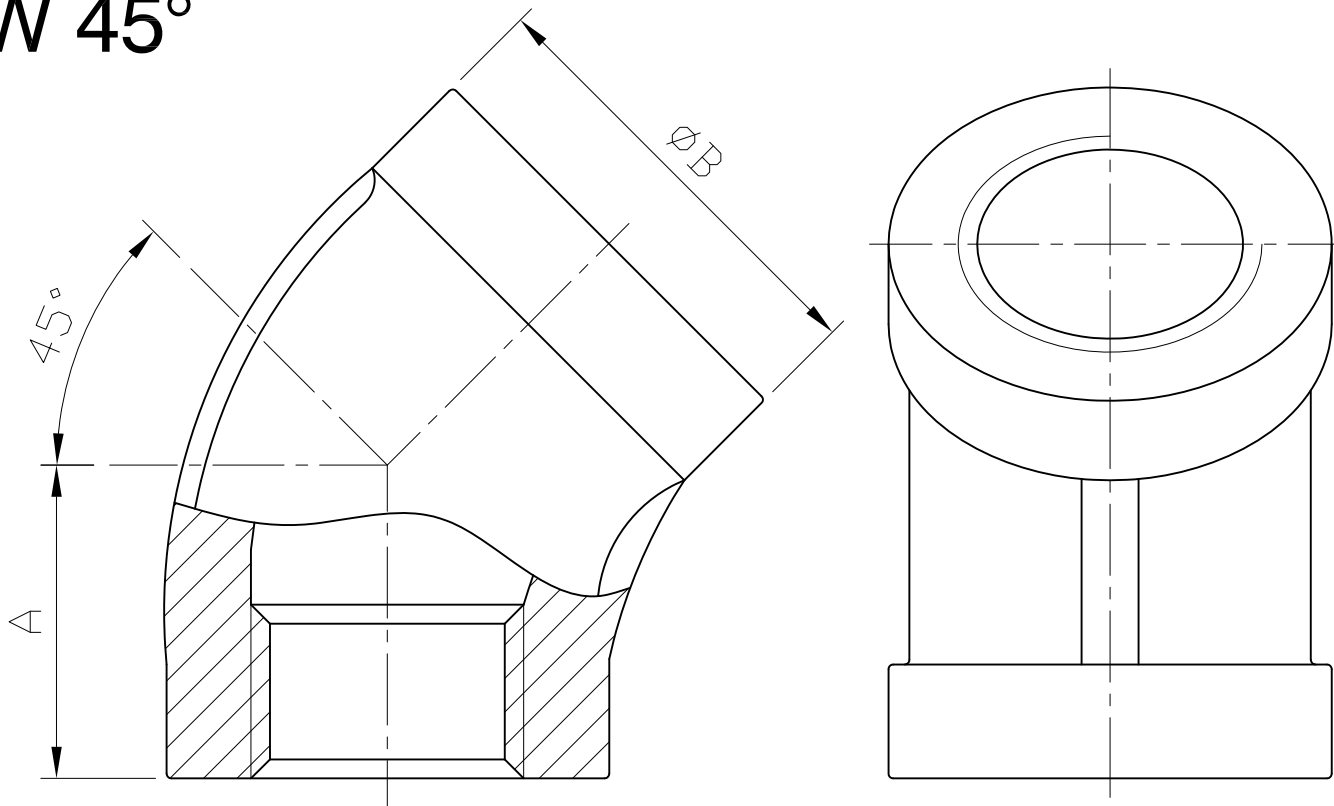


ELBOW 45°



SIZE	1/8"		1/4"		3/8"		2-1/2"		3"		4"	
	mm	in	mm	in	mm	in	mm	in	mm	in	mm	in
A	15	0.59	16	0.63	18	0.71	46	1.81	52	2.05	63	2.48
B	16	0.63	18.4	0.72	21.7	0.85	87	3.43	100	3.94	127.5	5.02
Weight	kg	lb	kg	lb	kg	lb	kg	lb	kg	lb	kg	lb
	0.032	0.071	0.034	0.075	0.046	0.101	1.148	2.531	1.053	2.321	1.775	3.913

Tolerance: $\pm 0.5\text{mm}(1/8''\sim 3/8'')$
 $\pm 0.8\text{mm}(2-1/2''\sim 4'')$

HAITIMA CORPORATION
 P.O.BOX 34-36 TAIPEI
 Tel:+886-2-26585800

E-mail:haitima@seednet.tw
 TAIWAN R.O.C. www.haitima.com.tw
 Fax:+886-2-26582266

Ra
 0.2
 1.6
 6.3
 25
 JIS

GENERAL TOLERANCE
 0.5-5 ± 0.1
 6-30 ± 0.2
 31-120 ± 0.3
 121-320 ± 0.5
 321-1000 ± 0.8



HAITIMA CORPORATION

CHECK BY

DRAWING BY

DATE

SPECIFICATION

Elbow 45°

Jammy

Oct.16.2015

MATERIAL

304/316

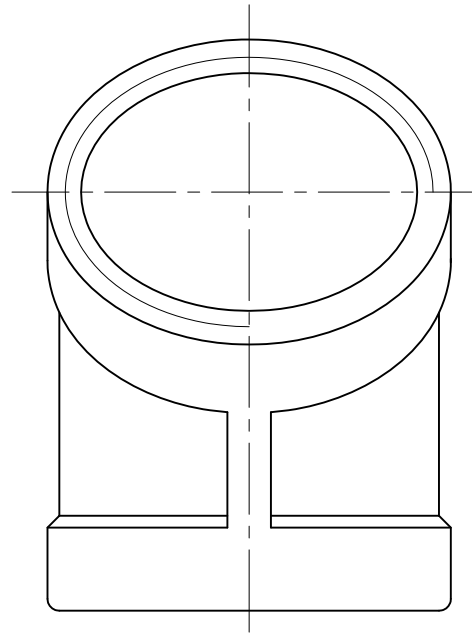
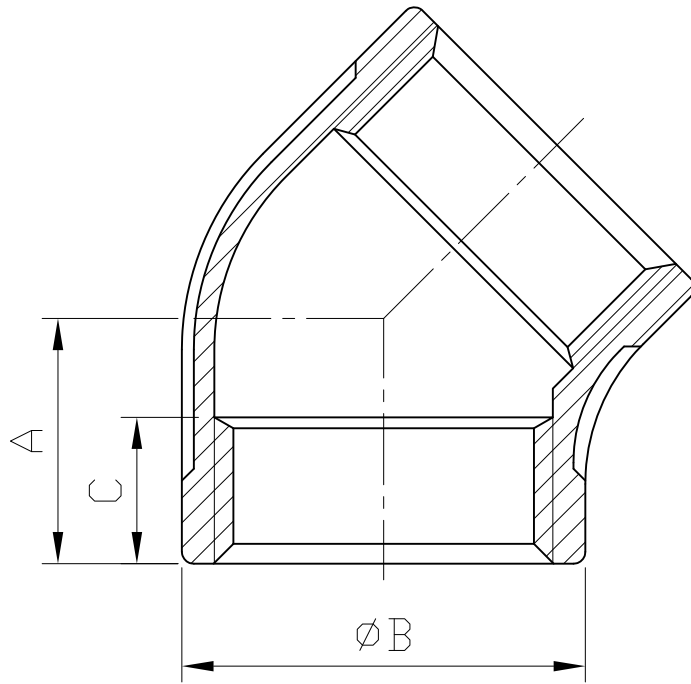
PROCESS/Nr.

UNIT / SCALE

mm

△			
△			
△			
Revise	Description	Date	Approve
DRAWING NO. F02-00		-15	

ELBOW 45°



SIZE	A		B		C		Weight	
	mm	in	mm	in	mm	in	kg	lb
1/2"	22	0.87	29	1.14	14	0.55	0.093	0.205
3/4"	25	0.98	34	1.34	14.5	0.57	0.119	0.262
1"	28	1.1	42.5	1.67	17.5	0.69	0.202	0.445
1-1/4"	31	1.22	51	2.01	18.5	0.73	0.291	0.642
1-1/2"	34	1.34	58	2.28	19	0.75	0.371	0.818
2"	39	1.54	72	2.83	20	0.79	0.575	1.268

Tolerance: ± 0.5mm(1/2"~2")

0.1	▽	JIS
0.2	▽	
1.6	▽	
6.3	▽	
25	▽	
~	~	

0.5-5	± 0.1
6-30	± 0.2
31-120	± 0.3
121-320	± 0.5
321-1000	± 0.8

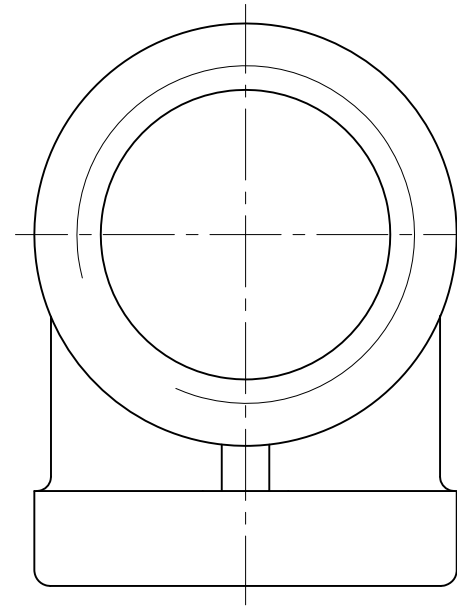
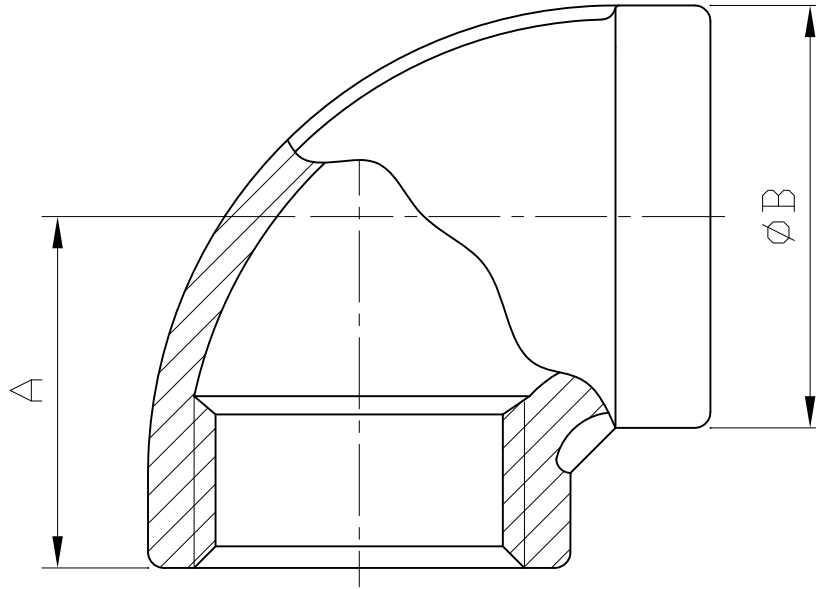
HAITIMA CORPORATION
 P.O.BOX 34-36 TAIPEI
 Tel:+886-2-26585800
 E-mail:haitima@seednet.tw
 TAIWAN R.O.C. www.haitimo.com.tw
 Fax:+886-2-26582266

△			
△			
△			
Revise	Description	Date	Approve
DRAWING NO. H02-01		-15	

HAITIMA CORPORATION

CHECK BY	DRAWING BY	DATE	SPECIFICATION	Elbow 45°
	<i>Sammy</i>	Oct.16.2015	MATERIAL	304/316
			PROCESS/Nr.	
			UNIT / SCALE	mm

ELBOW 90°



Ra	0.2	▽▽▽
	1.6	▽▽
	6.3	▽
	25	▽
Q	~	

GENERAL TOLERANCE	0.5-5 ± 0.1
	6-30 ± 0.2
	31-120 ± 0.3
	121-320 ± 0.5
	321-1000 ± 0.8

HAITIMA CORPORATION
 P.O.BOX 34-36 TAIPEI
 Tel:+886-2-26585800
 E-mail:haitima@seednet.tw
 TAIWAN R.O.C. www.haitima.com.tw
 Fax:+886-2-26582266

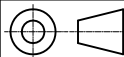
SIZE	1/8"		1/4"		3/8"		2-1/2" (NPT)		2-1/2" (PS)		3"		4"	
	mm	in	mm	in	mm	in	mm	in	mm	in	mm	in	mm	in
A	17	0.67	19	0.75	21.5	0.85	69	2.72	69	2.72	72	2.83	89	3.5
B	15.5	0.61	18.8	0.74	22.5	0.89	81.3	3.2	83.6	3.29	100.5	3.96	126	4.96
Weight	kg	lb	kg	lb	kg	lb	kg	lb	kg	lb	kg	lb	kg	lb
	0.023	0.051	0.031	0.068	0.046	0.101	0.914	2.015	0.914	2.015	1.224	2.698	2.15	4.74

Tolerance: ± 0.5mm(1/8"~3/8")
 ± 0.8mm(2-1/2"~4")

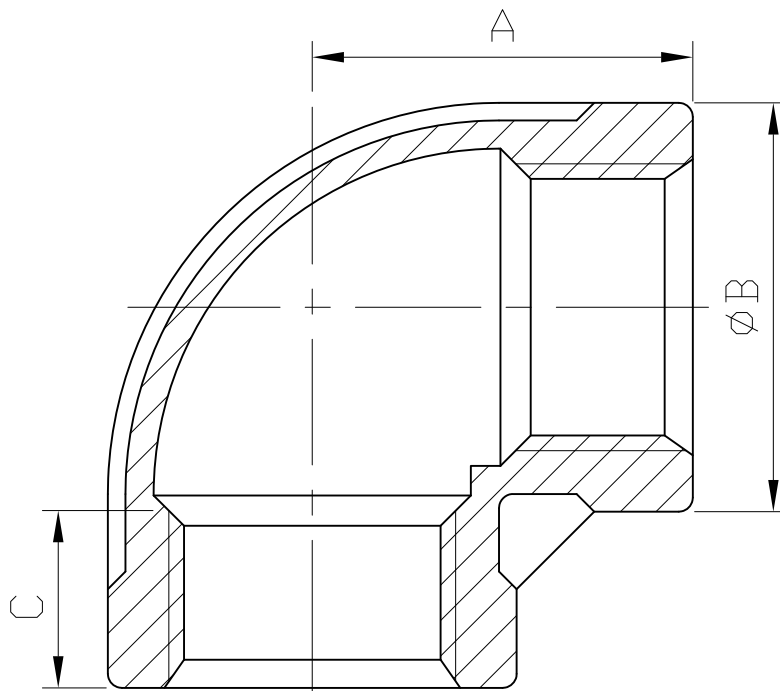
△			
△			
△			
Revise	Description	Date	Approve
DRAWING NO. F01-02		-15	



CHECK BY	DRAWING BY	DATE	SPECIFICATION	Elbow 90°
	<i>Sammy</i>	Oct.16.2015	MATERIAL	304/316
			PROCESS/Nr.	
			UNIT / SCALE	mm



ELBOW 90°



± 0.1	0.1	Ra
± 0.2	0.2	▽
± 0.3	0.3	▽
± 0.5	0.5	▽
± 0.8	0.8	▽
± 0.1	0.1	▽
± 0.2	0.2	▽
± 0.3	0.3	▽
± 0.5	0.5	▽
± 0.8	0.8	▽
± 0.1	0.1	▽
± 0.2	0.2	▽
± 0.3	0.3	▽
± 0.5	0.5	▽
± 0.8	0.8	▽

HAITIMA CORPORATION
 P.O.BOX 34-36 TAIPEI
 Tel:+886-2-26585800
 E-mail:haitima@seed.net.tw
 www.haitima.com.tw
 TAIWAN R.O.C.
 Fax:+886-2-26582266

SIZE	A		B		C		Weight	
	mm	in	mm	in	mm	in	kg	lb
1/2"	27	1.06	29	1.14	11.5	0.45	0.092	0.203
3/4"	32	1.26	34	1.34	12	0.47	0.124	0.273
1"	37	1.46	42.5	1.67	14	0.55	0.222	0.489
1-1/4"	44	1.73	51	2.01	15	0.59	0.314	0.692
1-1/2"	46	1.81	58	2.28	15.5	0.61	0.385	0.849
2"	55	2.17	72	2.83	16	0.63	0.64	1.411

Tolerance: ± 0.5mm

△			
△			
△			
Revise	Description	Date	Approve



CHECK BY	DRAWING BY	DATE	SPECIFICATION	Elbow 90°
	<i>Sammy</i>	Oct.16.2015	MATERIAL	304/316
			PROCESS/Nr.	
			UNIT / SCALE	mm

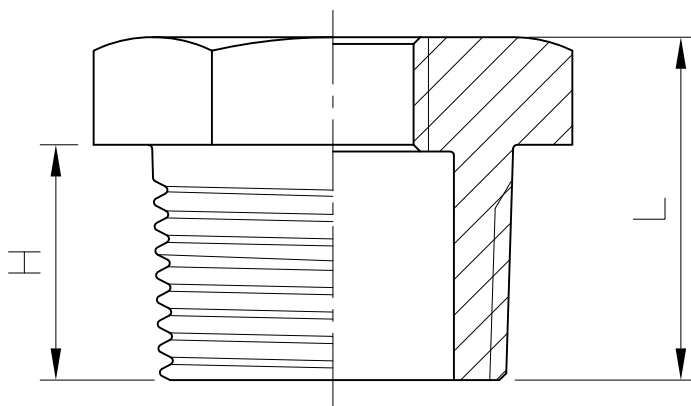
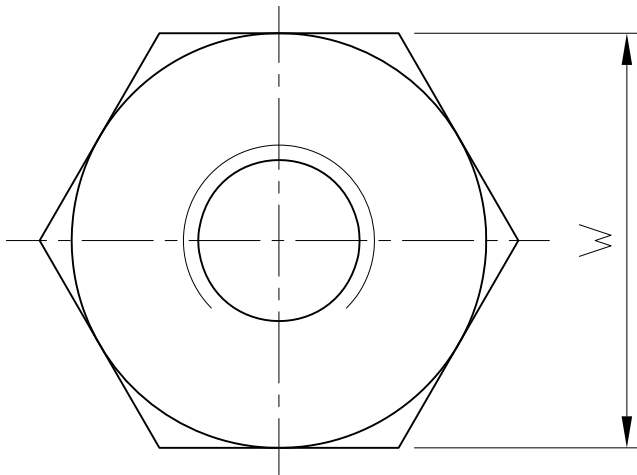
DRAWING NO. **H01-01** **-15**

Ra	0.2
▽	1.6
▽	6.3
▽	25
▽	0.1
▽	0.2
▽	0.3
▽	0.5
▽	0.8

GENERAL TOLERANCE	0.5~5 6~30 31~120 121~320 321~1000
-------------------	--

HAITIMA CORPORATION
 P.O.BOX 34-36 TAIPEI
 Tel:+886-2-26585800
 E-mail:haitima@seed.net.tw
 TAIWAN R.O.C. www.haitima.com.tw
 Fax:+886-2-26582266

HEXAGON BUSHING



1/8"~2" Hexagon
 2-1/2"~4" Octagon

SIZE	H		L		W		Weight		
	mm	in	mm	in	mm	in	kg	lb	
1/4"	1/8"	12.5	0.49	15	0.59	15	0.59	0.012	0.026
3/8"	1/8"	13	0.51	16.5	0.65	18	0.71	0.02	0.044
	1/4"	13	0.51	16.5	0.65	18	0.71	0.015	0.033
1/2"	1/8"	16	0.63	20	0.79	23	0.91	0.033	0.073
	1/4"	16	0.63	20	0.79	23	0.91	0.029	0.064
3/8"	1/8"	16	0.63	20	0.79	23	0.91	0.028	0.062
	3/8"	17	0.67	21.5	0.85	29	1.14	0.053	0.117
3/4"	1/4"	17	0.67	21.5	0.85	29	1.14	0.052	0.115
	3/8"	17	0.67	21.5	0.85	29	1.14	0.048	0.106
1"	1/2"	17	0.67	21.5	0.85	29	1.14	0.038	0.084
	1/8"	20	0.79	24.5	0.96	35	1.38	0.09	0.198
1"	1/4"	20	0.79	24.5	0.96	35	1.38	0.09	0.198
	3/8"	20	0.79	24.5	0.96	35	1.38	0.088	0.194
1-1/4"	1/2"	20	0.79	24.5	0.96	35	1.38	0.08	0.176
	3/4"	20	0.79	24.5	0.96	35	1.38	0.069	0.152
1-1/4"	1/8"	22	0.87	27.5	1.08	45	1.77	0.157	0.346
	1/4"	22	0.87	27.5	1.08	45	1.77	0.161	0.355
1-1/4"	3/8"	22	0.87	27.5	1.08	45	1.77	0.159	0.351
	1/2"	22	0.87	27.5	1.08	45	1.77	0.149	0.328
1-1/2"	3/4"	22	0.87	27.5	1.08	45	1.77	0.134	0.295
	1"	22	0.87	27.5	1.08	45	1.77	0.107	0.236
1-1/2"	1/8"	22	0.87	28	1.1	50	1.97	0.229	0.505
	1/4"	22	0.87	28	1.1	50	1.97	0.224	0.494
1-1/2"	3/8"	22	0.87	28	1.1	50	1.97	0.216	0.476
	1/2"	22	0.87	28	1.1	50	1.97	0.194	0.428
1-1/2"	3/4"	22	0.87	28	1.1	50	1.97	0.185	0.408
	1"	22	0.87	28	1.1	50	1.97	0.157	0.346
1-1/4"	22	0.87	28	1.1	50	1.97	0.132	0.291	

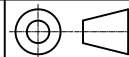
SIZE	H		L		W		Weight		
	mm	in	mm	in	mm	in	kg	lb	
2"	1/8"	23.5	0.93	31	1.22	62	2.44	0.338	0.745
	1/4"	23.5	0.93	31	1.22	62	2.44	0.347	0.765
	3/8"	23.5	0.93	31	1.22	62	2.44	0.337	0.743
	1/2"	23.5	0.93	31	1.22	62	2.44	0.334	0.736
	3/4"	23.5	0.93	31	1.22	62	2.44	0.328	0.723
	1"	23.5	0.93	31	1.22	62	2.44	0.307	0.677
2-1/2"	1-1/4"	23.5	0.93	31	1.22	62	2.44	0.278	0.613
	1-1/2"	23.5	0.93	31	1.22	62	2.44	0.23	0.507
	1/2"	27	1.06	34.5	1.36	78	3.07	0.622	1.371
	3/4"	27	1.06	34.5	1.36	78	3.07	0.604	1.332
	1"	27	1.06	34.5	1.36	78	3.07	0.629	1.387
	1-1/4"	27	1.06	34.5	1.36	78	3.07	0.571	1.259
3"	1-1/2"	27	1.06	34.5	1.36	78	3.07	0.378	0.833
	1/2"	29	1.14	40	1.57	90	3.54	0.872	1.922
	3/4"	29	1.14	40	1.57	90	3.54	0.861	1.898
	1"	29	1.14	40	1.57	90	3.54	0.933	2.057
	1-1/4"	29	1.14	40	1.57	90	3.54	0.852	1.878
	1-1/2"	29	1.14	40	1.57	90	3.54	0.815	1.797
4"	2"	29	1.14	40	1.57	90	3.54	0.706	1.556
	2-1/2"	29	1.14	40	1.57	90	3.54	0.61	1.345
	1/2"	31	1.22	44.5	1.75	118	4.65	-	-
	3/4"	31	1.22	44.5	1.75	118	4.65	-	-
	1"	31	1.22	44.5	1.75	118	4.65	1.72	3.792
	1-1/4"	31	1.22	44.5	1.75	118	4.65	1.671	3.684
4"	1-1/2"	31	1.22	44.5	1.75	118	4.65	1.617	3.565
	2"	31	1.22	44.5	1.75	118	4.65	1.512	3.333
4"	2-1/2"	31	1.22	44.5	1.75	118	4.65	1.463	3.225
	3"	31	1.22	44.5	1.75	118	4.65	1.153	2.542

Tolerance: ± 0.5mm(1/8"~2")
 ± 0.8mm(2-1/2"~4")

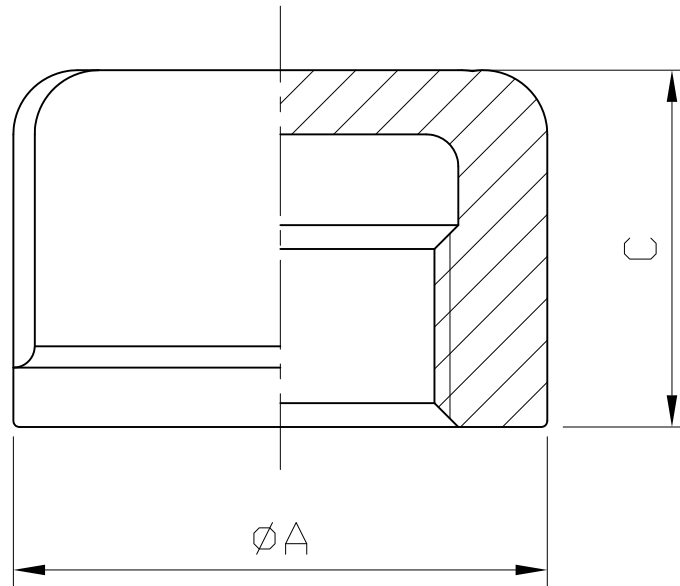
△			
△			
△			
Revise	Description	Date	Approve
DRAWING NO. F12		-15	



CHECK BY	DRAWING BY	DATE	SPECIFICATION	Hexagon Bushing
	Kevin	Jan.30.2015	MATERIAL	304/316
			PROCESS/Nr.	
			UNIT / SCALE	mm



ROUND CAP



SIZE	A		C		Weight	
	mm	in	mm	in	kg	lb
1/8"	15.9	0.63	17	0.67	0.014	0.031
1/4"	19.1	0.75	18.1	0.71	0.018	0.04
3/8"	22.7	0.89	18.2	0.72	0.023	0.051
1/2"	29.2	1.15	20	0.79	0.045	0.099
3/4"	34.3	1.35	21.6	0.85	0.054	0.119
1"	42	1.65	26.5	1.04	0.102	0.225
1-1/4"	51.1	2.01	29	1.14	0.137	0.302
1-1/2"	57.8	2.28	28.8	1.13	0.169	0.373
2"	70.4	2.77	31.6	1.24	0.252	0.556
2-1/2"	83.2	3.28	38.7	1.52	0.4	0.882
3"	100.2	3.94	40.7	1.6	0.583	1.285
4"	127.5	5.02	41	1.61	0.853	1.881

Tolerance: $\pm 0.5\text{mm}$ (1/8"~2")
 $\pm 0.8\text{mm}$ (2-1/2"~4")

Ra	0.2	▽▽▽▽
1.6	▽▽	▽▽▽
6.3	▽	▽▽
25	▽	▽
▽	~	~

GENERAL TOLERANCE	0.5-5 ± 0.1	6-30 ± 0.2	31-120 ± 0.3	121-320 ± 0.5	321-1000 ± 0.8
-------------------	----------------	---------------	-----------------	------------------	-------------------

HAITIMA CORPORATION
 P.O.BOX 34-36 TAIPEI
 Tel:+886-2-26585800
 E-mail:haitima@seednet.tw
 TAIWAN R.O.C. www.haitima.com.tw
 F.o.x:+886-2-26582266



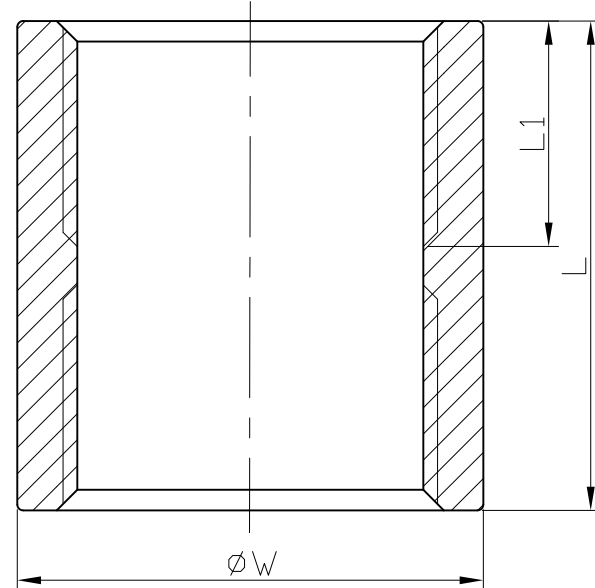
HAITIMA CORPORATION

CHECK BY	DRAWING BY	DATE	SPECIFICATION	Round Cap
	<i>Sammy</i>	Dec.08.2014	MATERIAL	304/316
			PROCESS/Nr.	
			UNIT / SCALE	mm

△			
△			
△			
Revise	Description	Date	Approve
DRAWING NO. F14		-14	

0.1 ± 0.1	▽	Ra
0.2 ± 0.2	▽▽	
1.6 ± 1.6	▽▽▽	
6.3 ± 6.3	▽▽▽▽	
25 ± 25	▽▽▽▽▽	
0.5~5 6~30	▽	JIS
31~120	▽	
121~320	▽	
321~1000	▽	

FULL COUPLING



HAITIMA CORPORATION
 P.O.BOX 34-36 TAIPEI
 Tel:+886-2-26585800
 E-mail:haitima@seed.net.tw
 www.haitima.com.tw
 TAIWAN R.O.C.
 Fax:+886-2-26582266

GENERAL TOLERANCE

SIZE	1/8"		1/4"		3/8"		1/2"		3/4"		1"		1-1/4"		1-1/2"		2"		2-1/2"		3"		4"	
	mm	in	mm	in	mm	in	mm	in	mm	in	mm	in	mm	in	mm	in	mm	in	mm	in	mm	in	mm	in
L	20	0.79	25	0.98	25	0.98	33	1.3	35	1.38	42.5	1.67	46.5	1.83	46	1.81	54.5	2.15	65	2.56	69	2.72	79	3.11
L1	8.5	0.33	11	0.43	12	0.47	15	0.59	16	0.63	18	0.71	20	0.79	21	0.83	23	0.91	28	1.1	30	1.18	34	1.34
W	15	0.59	19	0.75	22.5	0.89	27	1.06	32.5	1.28	40.5	1.59	49	1.93	55.5	2.19	68	2.68	85	3.35	97	3.82	124.5	4.9
Weight	kg	lb	kg	lb	kg	lb	kg	lb	kg	lb	kg	lb	kg	lb	kg	lb	kg	lb	kg	lb	kg	lb	kg	lb
	0.016	0.035	0.031	0.068	0.04	0.088	0.072	0.159	0.098	0.216	0.164	0.362	0.228	0.503	0.272	0.6	0.452	0.996	0.785	1.731	0.91	2.006	1.567	3.455

Tolerance: $\pm 0.5\text{mm}(1/8''\sim 2'')$
 $\pm 0.8\text{mm}(2-1/2''\sim 4'')$

△			
△			
△			
Revise	Description	Date	Approve
DRAWING NO.		H22-01	
		-15	

M HAITIMA CORPORATION

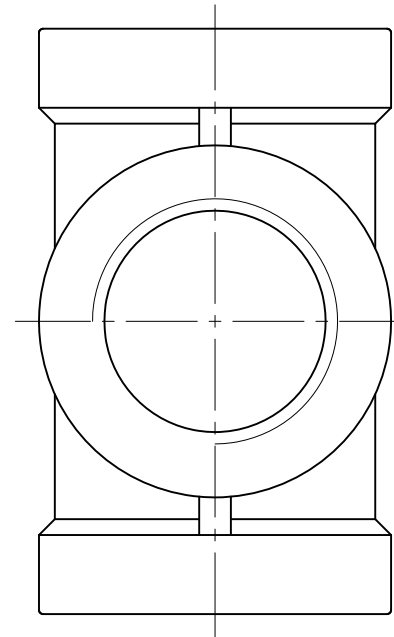
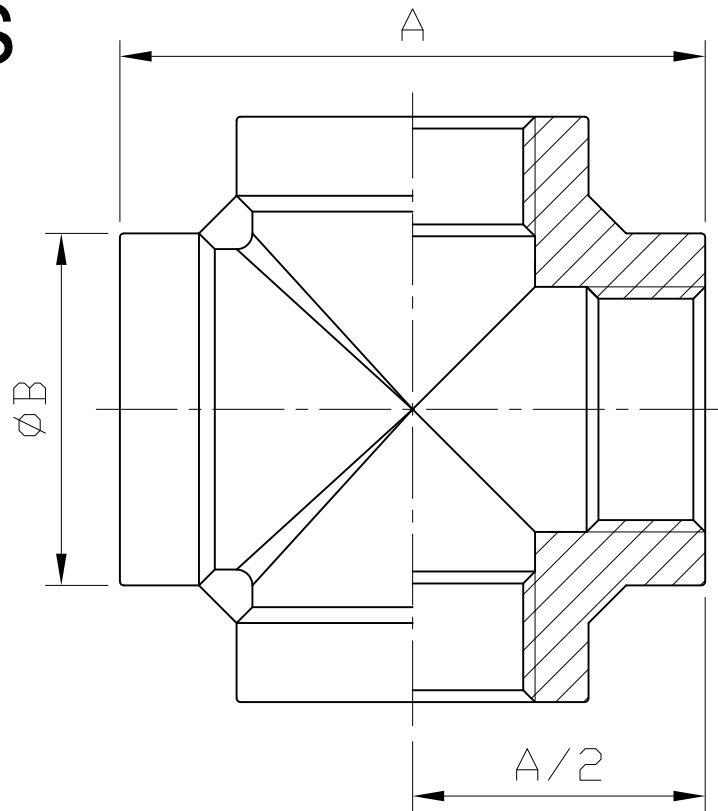
CHECK BY	DRAWING BY	DATE	SPECIFICATION	Full Coupling
	<i>Sammy</i>	Oct.16.2015	MATERIAL	304/316
			PROCESS/Nr.	
			UNIT / SCALE	mm

Ra	0.2	▽▽▽▽
1.6	▽▽	▽▽▽▽
6.3	▽	▽▽
25	▽	▽
◎	~	

GENERAL TOLERANCE	0.5-5 ± 0.1
	6-30 ± 0.2
	31-120 ± 0.3
	121-320 ± 0.5
	321-1000 ± 0.8

HAITIMA CORPORATION
 P.O.BOX 34-36 TAIPEI
 Tel:+886-2-26585800
 E-mail:haitima@seednet.tw
 TAIWAN R.O.C. www.haitimo.com.tw
 Fax:+886-2-26582266

CROSS



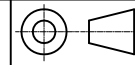
SIZE	1/8"		1/4"		3/8"		1/2"		3/4"		1"		1-1/4"		1-1/2"		2"		2-1/2" (NPT)		2-1/2" (PS)		3"		4"			
	mm	in	mm	in	mm	in	mm	in	mm	in	mm	in	mm	in	mm	in	mm	in	mm	in	mm	in	mm	in	mm	in		
A	34.1	1.34	38	1.5	44	1.73	55	2.17	63.4	2.5	73.2	2.88	85.6	3.37	89.8	3.54	108	4.25	128	5.04	137.2	5.4	143	5.63	180	7.09		
B	14.8	0.58	18.5	0.73	22.1	0.87	28.8	1.13	33.7	1.33	42	1.65	50.4	1.98	57.1	2.25	69.2	2.72	85	3.35	89.2	3.51	99.5	3.92	126	4.96		
Weight	kg	lb	kg	lb	kg	lb	kg	lb	kg	lb	kg	lb	kg	lb	kg	lb	kg	lb	kg	lb	kg	lb	kg	lb	kg	lb	kg	lb
	0.037	0.082	0.056	0.123	0.08	0.176	0.16	0.353	0.22	0.485	0.365	0.805	0.48	1.058	0.57	1.257	0.9	1.984	1.606	3.541	1.606	3.541	3.541	2	4.409	3.3	7.275	

Tolerance: ± 0.5mm(1/8"~2")
 ± 0.8mm(2-1/2"~4")

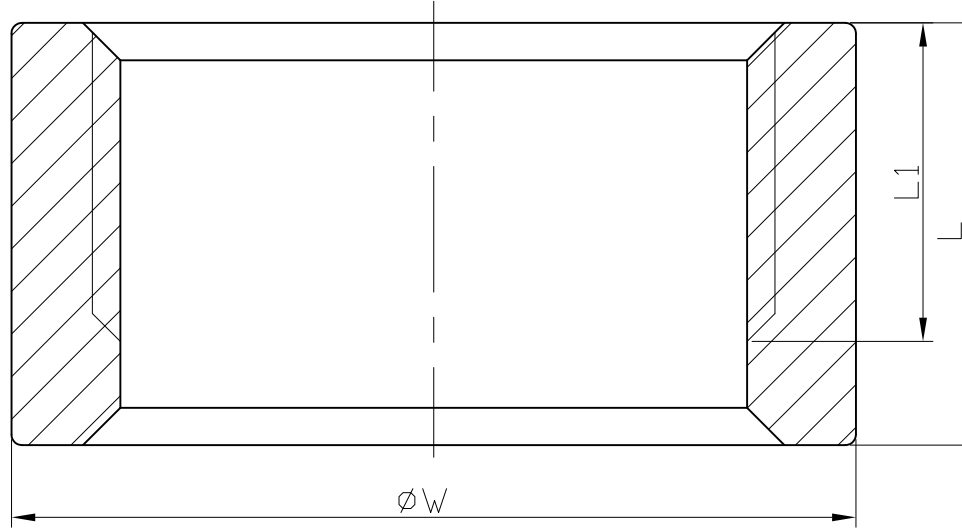
△			
△			
△			
Revise	Description	Date	Approve
DRAWING NO. F05		-14	



CHECK BY	DRAWING BY	DATE	SPECIFICATION
	<i>Sammy</i>	Dec.08.2014	Cross
			MATERIAL 304/316
			PROCESS/Nr.
			UNIT / SCALE mm



HALF COUPLING



SIZE	1/8"		1/4"		3/8"		1/2"		3/4"		1"		1-1/4"		1-1/2"		2"		2-1/2"		3"		4"	
	mm	in	mm	in	mm	in	mm	in	mm	in	mm	in	mm	in	mm	in	mm	in	mm	in	mm	in	mm	in
L	12	0.47	12	0.47	13	0.51	16.5	0.65	18.5	0.73	19.5	0.77	22.5	0.89	23	0.91	26.5	1.04	31.5	1.24	34.5	1.36	37	1.46
L1	9.5	0.37	9.5	0.37	10	0.39	13	0.51	14	0.55	15	0.59	18	0.71	19.5	0.77	20.5	0.81	26	1.02	28	1.1	29	1.14
W	15	0.59	19	0.75	22.5	0.89	27	1.06	32.5	1.28	40.5	1.59	49	1.93	55.5	2.19	68	2.68	85	3.35	97	3.82	124.5	4.9
Weight	kg	lb	kg	lb	kg	lb	kg	lb	kg	lb	kg	lb	kg	lb	kg	lb	kg	lb	kg	lb	kg	lb	kg	lb
	0.01	0.022	0.016	0.035	0.02	0.044	0.035	0.077	0.054	0.119	0.075	0.165	0.11	0.243	0.139	0.306	0.207	0.456	0.383	0.844	0.429	0.946	0.718	1.583

Tolerance: $\pm 0.5\text{mm}(1/8''\sim 2'')$
 $\pm 0.8\text{mm}(2-1/2''\sim 4'')$

HAITIMA CORPORATION
 P.O.BOX 34-36 TAIPEI
 Tel:+886-2-26585800
 E-mail:haitima@seed.net.tw
 www.haitima.com.tw
 TAIWAN R.O.C.
 Fax:+886-2-26582266

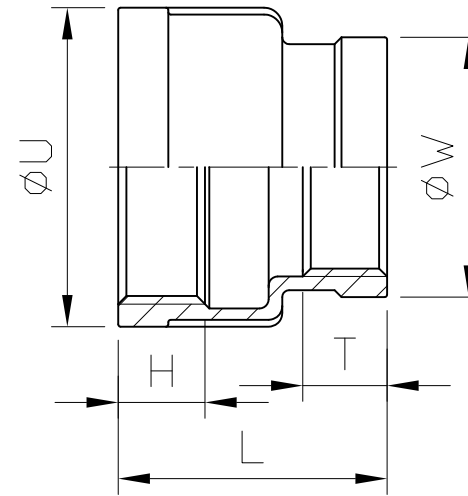
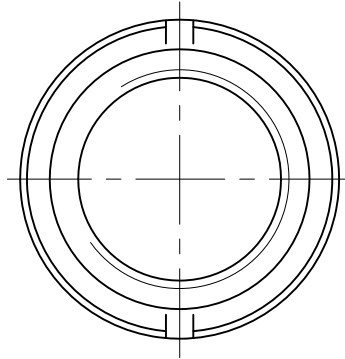


HAITIMA CORPORATION

CHECK BY	DRAWING BY	DATE	SPECIFICATION	Half Coupling
	<i>Sammy</i>	Oct.16.2015	MATERIAL	304/316
			PROCESS/Nr.	
			UNIT / SCALE	mm

Revise	Description	Date	Approve
DRAWING NO.		H23-01	
		-15	

REDUCING SOCKET



0.1	0.2	0.5	1.6	6.3	25	0.1	0.2	0.5	1.6	6.3	25
± 0.1	± 0.2	± 0.5	± 1.6	± 6.3	± 25	± 0.1	± 0.2	± 0.5	± 1.6	± 6.3	± 25
0.05	0.1	0.25	0.8	3	10	0.05	0.1	0.25	0.8	3	10
± 0.05	± 0.1	± 0.25	± 0.8	± 3	± 10	± 0.05	± 0.1	± 0.25	± 0.8	± 3	± 10

0.05-5	6-30	31-120	121-320	321-1000
± 0.1	± 0.2	± 0.3	± 0.5	± 0.8
GENERAL TOLERANCE				

HAITIMA CORPORATION
 P.O.BOX 34-36 TAIPEI
 Tel:+886-2-26585800

E-mail:haitima@seed.net.tw
 TAIWAN R.O.C. www.haitima.com.tw
 Fax:+886-2-26582266

SIZE		H		T		L		U		W		Weight	
mm	in	mm	in	mm	in	mm	in	mm	in	mm	in	kg	lb
1/4"	1/8"	12	0.47	12	0.47	24	0.94	18	0.71	15	0.59	0.02	0.044
3/8"	1/8"	12	0.47	12	0.47	29	1.14	22	0.87	15	0.59	0.026	0.057
	1/4"	12	0.47	12	0.47	29	1.14	22	0.87	18	0.71	0.029	0.064
1/2"	1/8"	14	0.55	12	0.47	34	1.34	28	1.1	15	0.59	0.058	0.128
	1/4"	14	0.55	12	0.47	34	1.34	28	1.1	18	0.71	0.058	0.128
3/4"	3/8"	14	0.55	12	0.47	34	1.34	28	1.1	22	0.87	0.062	0.137
	1/8"	14	0.55	12	0.47	34	1.34	34	1.34	15	0.59	0.065	0.143
	1/4"	14	0.55	12	0.47	34	1.34	34	1.34	18	0.71	0.067	0.148
1"	3/8"	14	0.55	12	0.47	36	1.42	34	1.34	22	0.87	0.07	0.154
	1/2"	14	0.55	14	0.55	36	1.42	34	1.34	28	1.1	0.079	0.174
	1/8"	17.5	0.69	12	0.47	39	1.54	42	1.65	15.5	0.61	0.105	0.231
1-1/4"	1/4"	17.5	0.69	12	0.47	39	1.54	42	1.65	19	0.75	0.113	0.249
	3/8"	17.5	0.69	12	0.47	41	1.61	42	1.65	22	0.87	0.111	0.245
	1/2"	17.5	0.69	14	0.55	41	1.61	42	1.65	28	1.1	0.121	0.267
1-1/2"	3/4"	17.5	0.69	13.5	0.53	42	1.65	42	1.65	34	1.34	0.125	0.276
	1/8"	23.5	0.93	12	0.47	42	1.65	50	1.97	16	0.63	0.151	0.333
	1/4"	23.5	0.93	12	0.47	42	1.65	50	1.97	18	0.71	0.156	0.344
	3/8"	23.5	0.93	12	0.47	42	1.65	50	1.97	22	0.87	0.156	0.344
2"	1/2"	23.5	0.93	14	0.55	46	1.81	50	1.97	28	1.1	0.161	0.355
	3/4"	23.5	0.93	14	0.55	46	1.81	50	1.97	34	1.34	0.175	0.386
	1"	23.5	0.93	14	0.55	47	1.85	50	1.97	41.5	1.63	0.185	0.408
	1/8"	28.5	1.12	12	0.47	43.5	1.71	57	2.24	16	0.63	0.203	0.448
2-1/2"	1/4"	28.5	1.12	12	0.47	43.5	1.71	57	2.24	18	0.71	0.198	0.437
	3/8"	28.5	1.12	12	0.47	43.5	1.71	57	2.24	22	0.87	0.204	0.45
	1/2"	28.5	1.12	14	0.55	47	1.85	57	2.24	28	1.1	0.21	0.463
	3/4"	28.5	1.12	14	0.55	47	1.85	57	2.24	34	1.34	0.209	0.461
	1"	28.5	1.12	14	0.55	49	1.93	57	2.24	42	1.65	0.235	0.518
3"	28.5	1.12	15	0.59	51	2.01	57	2.24	50	1.97	0.236	0.52	

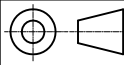
SIZE		H		T		L		U		W		Weight	
mm	in	mm	in	mm	in	mm	in	mm	in	mm	in	kg	lb
2"	1/8"	34.5	1.36	12	0.47	47	1.85	70	2.76	14.8	0.58	-	-
	1/4"	34.5	1.36	12	0.47	48	1.89	70	2.76	18.5	0.73	0.342	0.754
	3/8"	34.5	1.36	12	0.47	50	1.97	70	2.76	22.1	0.87	0.317	0.699
	1/2"	34.5	1.36	14	0.55	51	2.01	70	2.76	28	1.1	0.307	0.677
	3/4"	34.5	1.36	14	0.55	55	2.17	70	2.76	34	1.34	0.33	0.728
	1"	34.5	1.36	14	0.55	55	2.17	70	2.76	41	1.61	0.345	0.761
2-1/2"	1-1/4"	34.5	1.36	15	0.59	59	2.32	70	2.76	50	1.97	0.35	0.772
	1-1/2"	34.5	1.36	16	0.63	59	2.32	70	2.76	57	2.24	0.362	0.798
	1"	37.5	1.48	14	0.55	59	2.32	88	3.46	41	1.61	0.723	1.594
	1-1/4"	37.5	1.48	15	0.59	59	2.32	88	3.46	50	1.97	0.642	1.415
3"	1-1/2"	37.5	1.48	16	0.63	60	2.36	88	3.46	57	2.24	0.645	1.422
	2"	37.5	1.48	16.5	0.65	61	2.4	88	3.46	70	2.76	0.557	1.228
	3/4"	42.5	1.67	14	0.55	62	2.44	102	4.02	34	1.34	0.726	1.601
	1"	42.5	1.67	14	0.55	62	2.44	102	4.02	41	1.61	0.699	1.541
	1-1/4"	42.5	1.67	15	0.59	63	2.48	102	4.02	50	1.97	0.767	1.691
	1-1/2"	42.5	1.67	16	0.63	63	2.48	102	4.02	57	2.24	0.783	1.726
4"	2"	42.5	1.67	16.5	0.65	65	2.56	102	4.02	73	2.87	0.789	1.739
	2-1/2"	42.5	1.67	17.5	0.69	71	2.8	102	4.02	88	3.46	1.076	2.372
	1-1/4"	45.5	1.79	15	0.59	66	2.6	130	5.12	60	2.36	1.138	2.509
	1-1/2"	45.5	1.79	16	0.63	66.5	2.62	130	5.12	60	2.36	1.069	2.357
	2"	45.5	1.79	16.5	0.65	67	2.64	130	5.12	73	2.87	1.161	2.56
2-1/2"	45.5	1.79	17.5	0.69	71	2.8	130	5.12	88	3.46	1.143	2.52	
3"	45.5	1.79	18	0.71	77	3.03	130	5.12	102	4.02	1.367	3.014	

Tolerance: ± 0.5mm(1/8"~2")
 ± 0.8mm(2-1/2"~4")

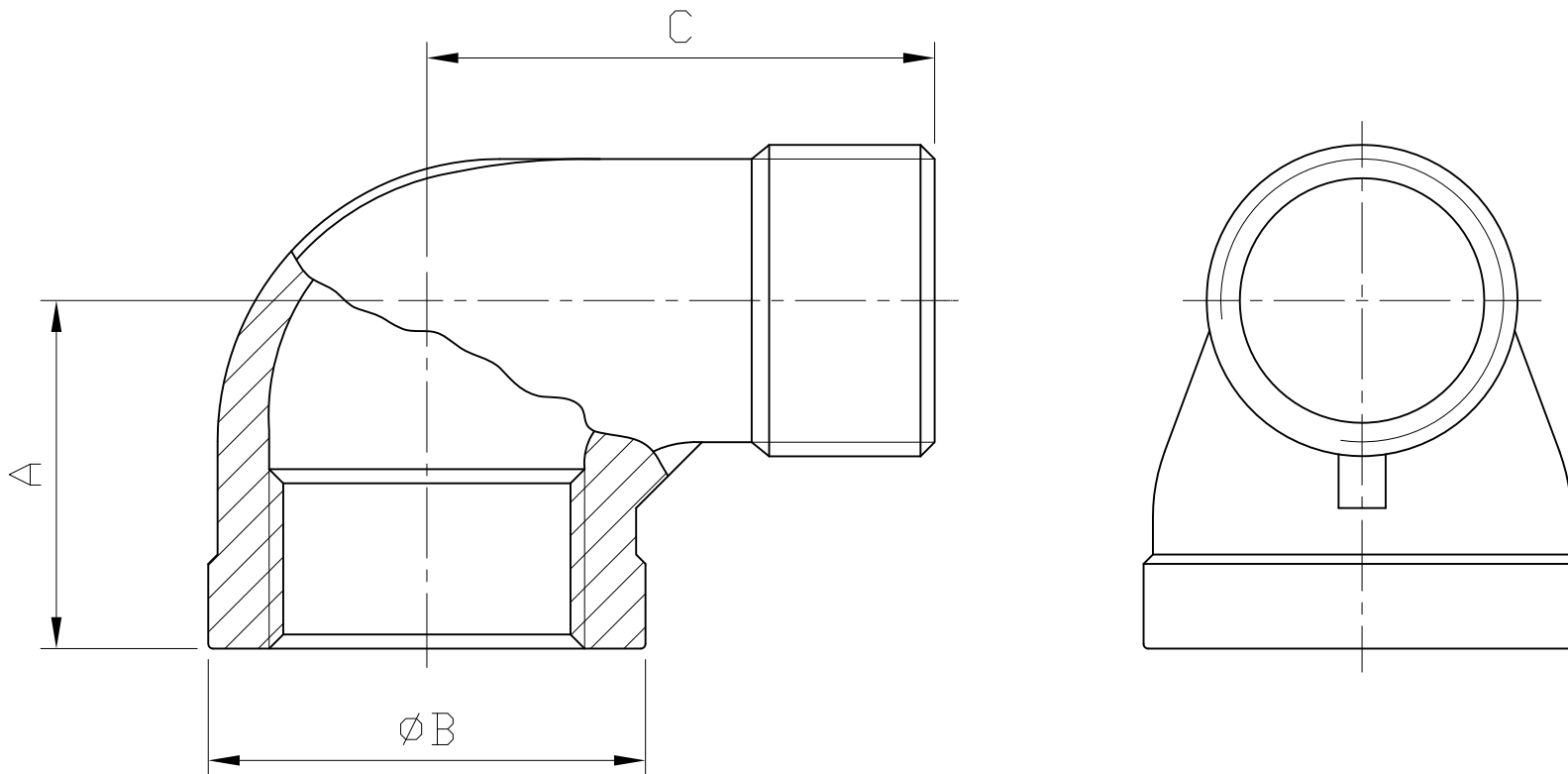
△			
△			
△			
Revise	Description	Date	Approve
DRAWING NO. F24		-15	

HAITIMA CORPORATION

CHECK BY	DRAWING BY	DATE	SPECIFICATION
	<i>Sammy</i>	Jan.07.2015	Reducing Socket
			MATERIAL 304/316
			PROCESS/Nr.
			UNIT / SCALE mm



STREET ELBOW 90° M/F



SIZE	1/8"		1/4"		3/8"		2-1/2" (NPT)		2-1/2" (PS)		3"		4"	
	mm	in	mm	in	mm	in	mm	in	mm	in	mm	in	mm	in
A	19	0.75	21.5	0.85	24.5	0.96	66	2.6	66	2.6	74	2.91	90	3.54
B	15	0.59	20.5	0.81	24	0.94	84	3.31	87.4	3.44	101.8	4.01	128	5.04
C	26.5	1.04	30.8	1.21	36.5	1.44	93	3.66	93	3.66	107	4.21	130	5.12
Weight	kg	lb	kg	lb	kg	lb	kg	lb	kg	lb	kg	lb	kg	lb
	0.025	0.055	0.041	0.09	0.059	0.13	0.897	1.978	0.897	1.978	1.71	3.77	3.05	6.724

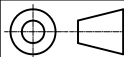
Tolerance: $\pm 0.5\text{mm}$ (1/8"~3/8")
 $\pm 0.8\text{mm}$ (2-1/2"~4")

HAITIMA CORPORATION
 P.O.BOX 34-36 TAIPEI
 Tel:+886-2-26585800
 E-mail:haitima@seednet.tw
 TAIWAN R.O.C. www.haitima.com.tw
 Fax:+886-2-26582266



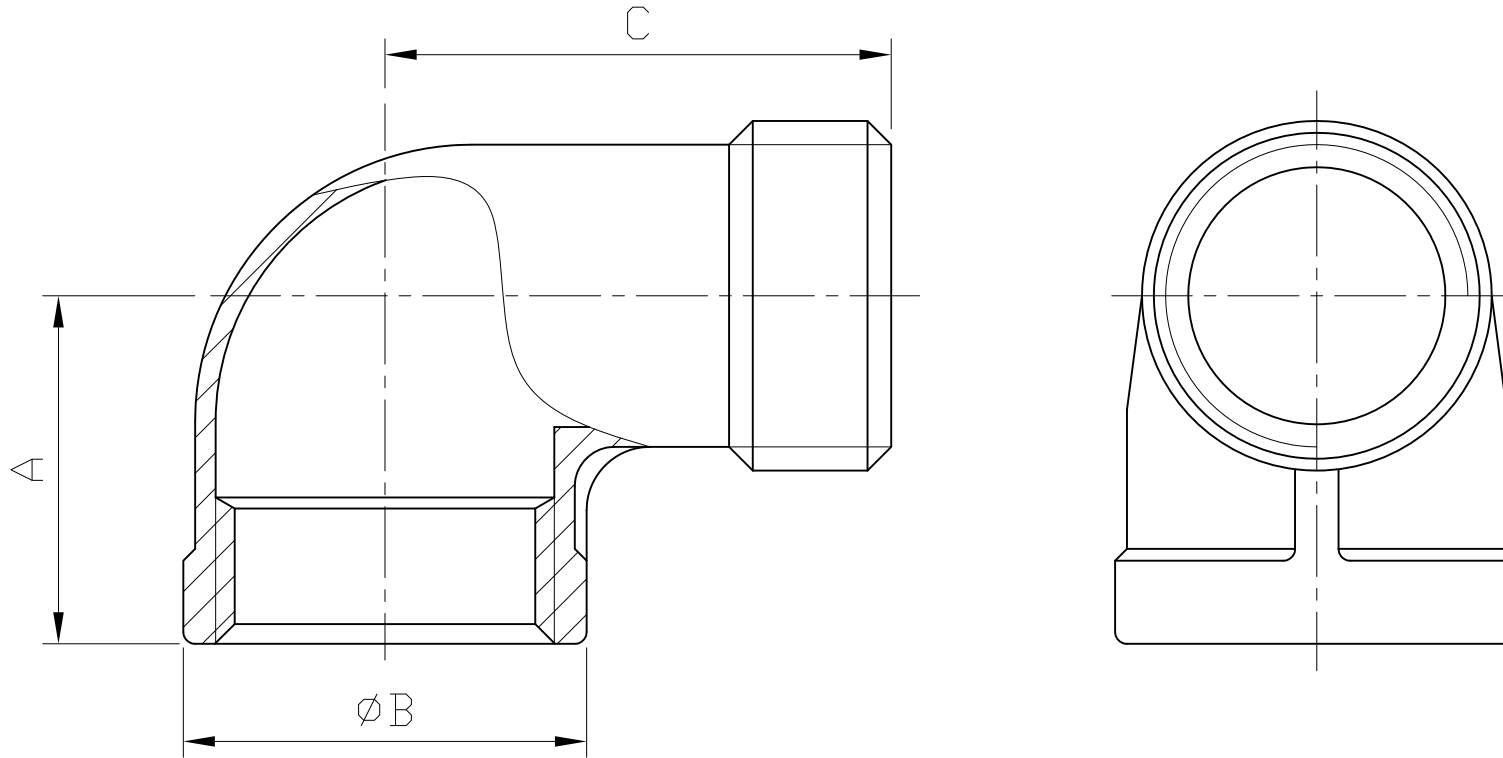
HAITIMA CORPORATION

CHECK BY	DRAWING BY	DATE	SPECIFICATION	Street Elbow 90° M/F
	<i>Sammy</i>	Oct.16.2015	MATERIAL	304/316
			PROCESS/Nr.	
			UNIT / SCALE	mm



△			
△			
△			
Revise	Description	Date	Approve
DRAWING NO. F03-04		-15	

STREET ELBOW 90° M/F



SIZE	A		B		C		Weight	
	mm	in	mm	in	mm	in	kg	lb
1/2"	27	1.06	29	1.14	43	1.69	0.09	0.198
3/4"	32	1.26	34	1.34	50	1.97	0.125	0.276
1"	36.5	1.44	42.5	1.67	57	2.24	0.203	0.448
1 1/4"	44	1.73	51	2.01	64	2.52	0.329	0.725
1 1/2"	46	1.81	58	2.28	69	2.72	0.419	0.924
2"	55	2.17	72	2.83	79.5	3.13	0.645	1.422

Tolerance: $\pm 0.5\text{mm}(1/2''\sim 2'')$

HAITIMA CORPORATION
 P.O.BOX 34-36 TAIPEI
 Tel:+886-2-26585800
 E-mail:haitima@seed.net.tw
 TAIWAN R.O.C. www.haitima.com.tw
 Fax:+886-2-26582266



HAITIMA CORPORATION

CHECK BY

DRAWING BY

DATE

SPECIFICATION

Street Elbow 90° M/F

Sammy

Oct.16.2015

MATERIAL

304/316

PROCESS/Nr.

UNIT / SCALE

mm

△			
△			
△			
Revise	Description	Date	Approve

DRAWING NO.

H03-01

-15

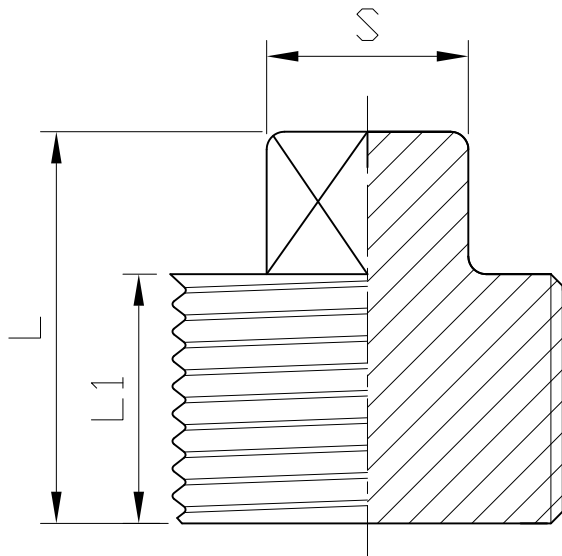
SQUARE PLUG

Ra	0.2	▽▽▽
▽	1.6	▽▽
▽	6.3	▽
▽	25	▽
▽	~	▽

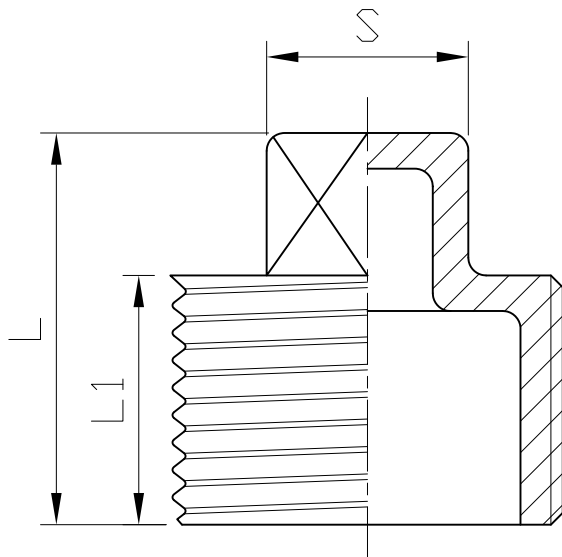
± 0.1	0.5~5
± 0.2	6~30
± 0.3	31~120
± 0.5	121~320
± 0.8	321~1000
GENERAL TOLERANCE	

HAITIMA CORPORATION
 P.O.BOX 34-36 TAIPEI
 Tel:+886-2-26585800
 E-mail:haitima@seednet.tw
 TAIWAN R.O.C. www.haitima.com.tw
 F.o.x:+886-2-26582266

1/8"~1/4"



3/8"~4"



SIZE	L		L1		S		Weight	
	mm	in	mm	in	mm	in	kg	lb
1/8"	18	0.71	11	0.43	7.2	0.28	0.009	0.02
1/4"	20	0.79	12	0.47	8	0.31	0.015	0.033
3/8"	20	0.79	12	0.47	10	0.39	0.017	0.037
1/2"	25	0.98	15	0.59	13	0.51	0.03	0.066
3/4"	26.5	1.04	15.5	0.61	16	0.63	0.044	0.097
1"	33	1.3	20	0.79	19	0.75	0.075	0.165
1-1/4"	35	1.38	20	0.79	22	0.87	0.115	0.254
1-1/2"	35	1.38	20	0.79	25	0.98	0.14	0.309
2"	40	1.57	23	0.91	29	1.14	0.215	0.474
2-1/2"	47	1.85	26.5	1.04	39	1.54	0.339	0.747
3"	47	1.85	27	1.06	44	1.73	0.524	1.155
4"	53	2.09	31	1.22	58	2.28	0.815	1.797

Tolerance: ± 0.5mm(1/8"~2")
 ± 0.8mm(2-1/2"~4")

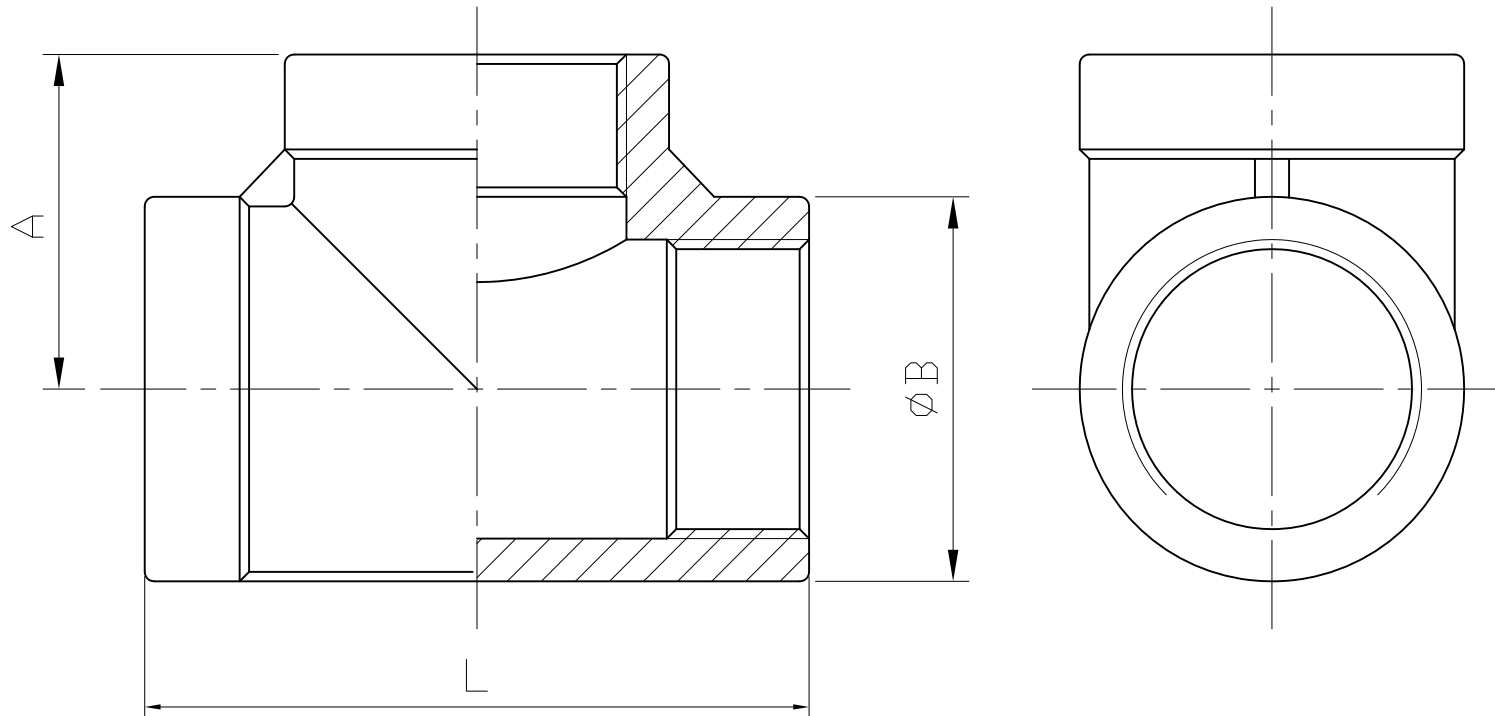
△			
△			
△			
Revise	Description	Date	Approve
DRAWING NO. F16		-15	



HAITIMA CORPORATION

CHECK BY	DRAWING BY	DATE	SPECIFICATION	Square Plug
	<i>Kevin</i>	Jan.30.2015	MATERIAL	304/316
			PROCESS/Nr.	
			UNIT / SCALE	mm

TEE



SIZE	1/8"		1/4"		3/8"		2-1/2" (NPT)		2-1/2" (PS)		3"		4"	
	mm	in	mm	in	mm	in	mm	in	mm	in	mm	in	mm	in
A	17	0.67	19.5	0.77	22	0.87	64	2.52	68	2.68	72	2.83	91	3.58
B	15	0.59	18.5	0.73	22	0.87	83.5	3.29	83.5	3.29	100	3.94	128	5.04
L	34	1.34	39	1.54	44	1.73	128	5.04	136	5.35	144	5.67	182	7.17
Weight	kg	lb	kg	lb	kg	lb	kg	lb	kg	lb	kg	lb	kg	lb
	0.034	0.075	0.047	0.104	0.066	0.146	1.19	2.623	1.19	2.623	1.53	3.373	2.677	5.902

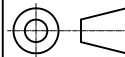
Tolerance: $\pm 0.5\text{mm}(1/8''\sim 3/8'')$
 $\pm 0.8\text{mm}(2-1/2''\sim 4'')$

HAITIMA CORPORATION
 P.O.BOX 34-36 TAIPEI
 Tel:+886-2-26585800
 E-mail:haitima@seednet.tw
 TAIWAN R.O.C. www.haitima.com.tw
 Fax:+886-2-26582266



HAITIMA CORPORATION

CHECK BY	DRAWING BY	DATE	SPECIFICATION
	<i>Sammy</i>	Oct.16.2015	Tee
			MATERIAL 304/316
			PROCESS/Nr.
			UNIT / SCALE mm



△			
△			
△			
Revise	Description	Date	Approve
DRAWING NO. F04-01		-15	

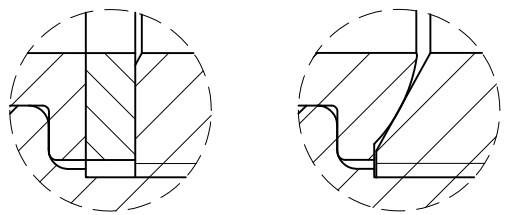
Ra	0.2	▽▽▽
	1.6	▽▽
	6.3	▽
	25	▽
	~	~

GENERAL TOLERANCE	± 0.1
	± 0.2
	± 0.3
	± 0.5
	± 0.8
	0.5~5
	6~30
	31~120
	121~320
	321~1000

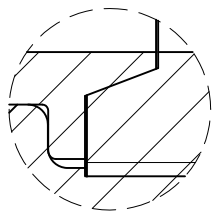
HAITIMA CORPORATION
 P.O.BOX 34-36 TAIPEI
 Tel:+886-2-26585800
 E-mail:haitima@seednet.tw
 TAIWAN R.O.C. www.haitima.com.tw
 Fax:+886-2-26582266

UNION F/F

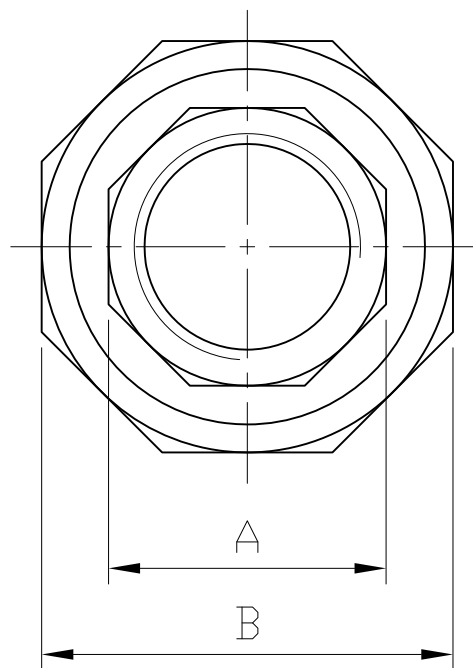
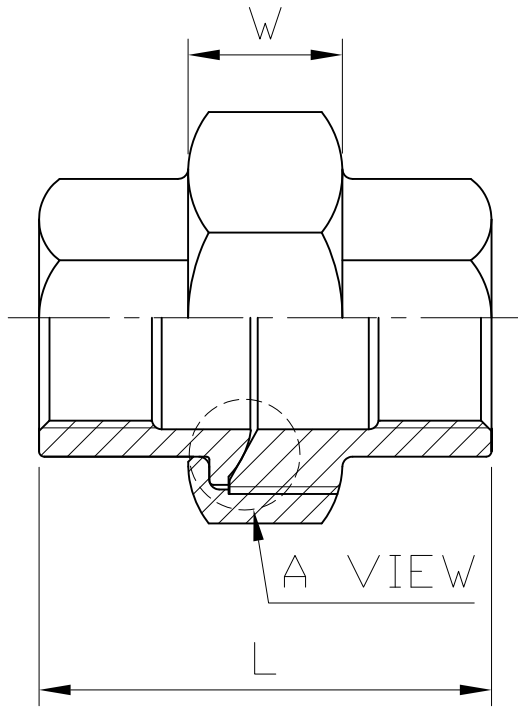
A VIEW



Flat union Conical union



Conical union
with conical seat



1/8"~1/4" Hexagon
 3/8"~1" Octagon
 1-1/4"~4" Decagon

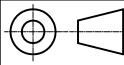
SIZE	1/8"		1/4"		3/8"		1/2"		3/4"		1"		1-1/4"		1-1/2"		2"		2-1/2"		3"		4"	
	mm	in	mm	in	mm	in	mm	in	mm	in	mm	in	mm	in	mm	in	mm	in	mm	in	mm	in	mm	in
L	34.5	1.36	34.5	1.36	37.6	1.48	38.6	1.52	44	1.73	51	2.01	58	2.28	59	2.32	61.5	2.42	71	2.8	90	3.54	97	3.82
A	17.2	0.68	17.5	0.69	20.5	0.81	26.5	1.04	31.2	1.23	38	1.5	47.5	1.87	54	2.13	67	2.64	83	3.27	96	3.78	122.5	4.82
B	28	1.1	28	1.1	34	1.34	39.2	1.54	46	1.81	55	2.17	63.5	2.5	71	2.8	85	3.35	105.5	4.15	123.7	4.87	153.5	6.04
W	12.2	0.48	12.2	0.48	15	0.59	15	0.59	15	0.59	17	0.67	20	0.79	20	0.79	20.8	0.82	24	0.94	28	1.1	33	1.3
Weight	kg	lb	kg	lb	kg	lb	kg	lb	kg	lb	kg	lb	kg	lb	kg	lb	kg	lb	kg	lb	kg	lb	kg	lb
	0.06	0.132	0.07	0.154	0.103	0.227	0.15	0.331	0.194	0.428	0.299	0.659	0.412	0.908	0.497	1.096	0.759	1.673	1.384	3.051	2	4.409	3.15	6.945

Tolerance: ± 0.5mm(1/8"~2")
 ± 0.8mm(2-1/2"~4")

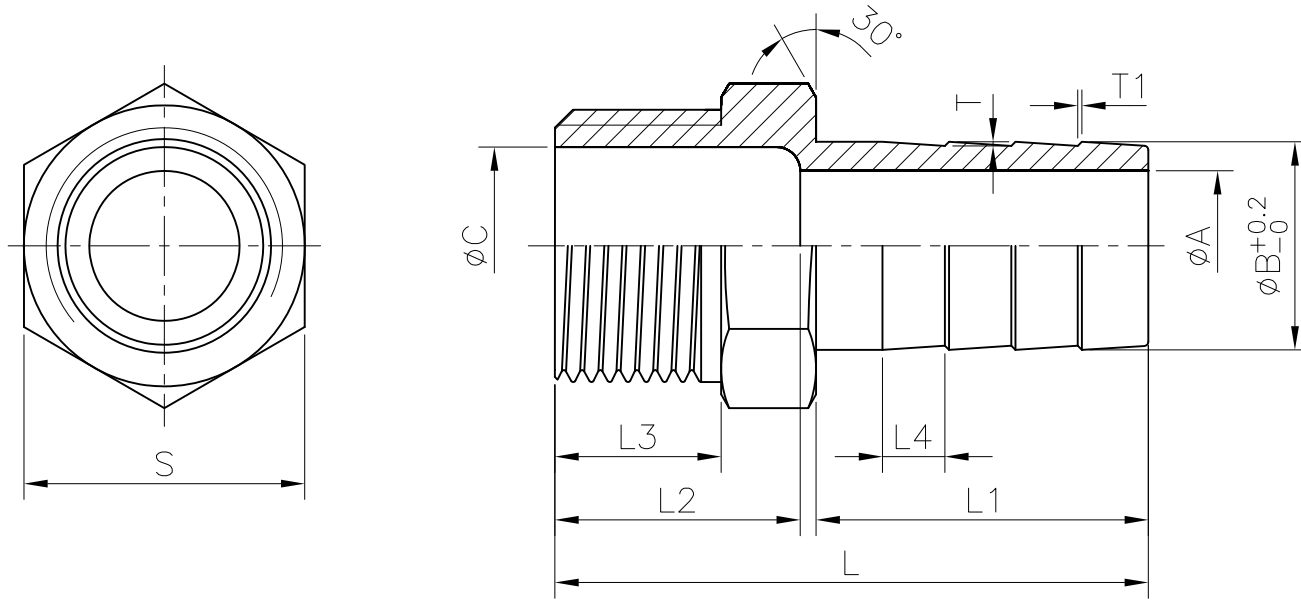
△			
△			
△			
Revise	Description	Date	Approve
DRAWING NO. F18		-14	

HAITIMA CORPORATION

CHECK BY	DRAWING BY	DATE	SPECIFICATION
	<i>Sammy</i>	Dec.08.2014	Union F/F
			MATERIAL 304/316
			PROCESS/Nr.
			UNIT / SCALE mm



HOSE NIPPLE



SIZE	A		B		C		L		L1		L2		L3		L4		S		T		T1		Weight		
	mm	in	mm	in	mm	in	mm	in	mm	in	mm	in	mm	in	mm	in	mm	in	mm	in	mm	in	kg	lb	
1/8"	6 mm	3	0.12	6	0.24	5	0.2	34	1.34	19	0.75	12.5	0.49	10	0.39	3.8	0.15	12.5	0.49	0.5	0.02	-	-	0.01	0.022
	8 mm	4	0.16	8	0.31	8	0.31	43	1.69	25	0.98	13.5	0.53	11.5	0.45	5	0.2	14.5	0.57	0.5	0.02	-	-	0.02	0.044
1/4"	10 mm	5	0.2	10	0.39	8	0.31	43	1.69	24.5	0.96	15	0.59	12	0.47	4.9	0.19	15	0.59	0.5	0.02	-	-	0.026	0.057
	13 mm	7	0.28	13	0.51	8	0.31	43	1.69	24.5	0.96	15	0.59	12	0.47	4.9	0.19	15	0.59	0.5	0.02	-	-	-	-
	13 mm	7	0.28	13	0.51	8	0.31	46	1.81	28.5	1.12	14	0.55	11	0.43	5.7	0.22	15	0.59	0.5	0.02	-	-	0.035	0.077
	15 mm	8	0.31	15	0.59	8	0.31	43	1.69	24.5	0.96	-	-	12	0.47	4.9	0.19	16	0.63	0.5	0.02	-	-	0.036	0.079
3/8"	10 mm	5	0.2	10	0.39	12	0.47	49	1.93	29.5	1.16	14	0.55	13	0.51	5.9	0.23	19	0.75	0.5	0.02	-	-	0.073	0.161
	16 mm	10	0.39	16	0.63	12	0.47	49	1.93	30	1.18	16	0.63	12.6	0.5	6	0.24	19	0.75	0.5	0.02	-	-	0.043	0.095
	10 mm	5	0.2	10	0.39	12	0.47	53	2.09	33.5	1.32	14	0.55	13	0.51	6.7	0.26	19	0.75	0.5	0.02	-	-	0.034	0.075
1/2"	13 mm	8	0.31	13	0.51	12	0.47	49	1.93	30	1.18	16	0.63	12	0.47	6	0.24	18.5	0.73	0.5	0.02	-	-	0.036	0.079
	11.5 mm	5	0.2	11.5	0.45	16	0.63	56.5	2.22	33	1.3	19	0.75	15	0.59	6.6	0.26	23	0.91	0.5	0.02	-	-	0.053	0.117
	13 mm	7	0.28	13	0.51	16	0.63	56.5	2.22	32.5	1.28	19	0.75	15	0.59	6.5	0.26	23	0.91	0.5	0.02	-	-	0.0575	0.127
3/4"	15 mm	10	0.39	15	0.59	16	0.63	56.5	2.22	33	1.3	19	0.75	15	0.59	6.6	0.26	23	0.91	0.5	0.02	-	-	0.056	0.123
	19.5 mm	15	0.59	19.5	0.77	16	0.63	56.5	2.22	33.5	1.32	20	0.79	15.5	0.61	6.7	0.26	23	0.91	0.5	0.02	-	-	0.057	0.126
	13 mm	8	0.31	13	0.51	21	0.83	60	2.36	33.5	1.32	21	0.83	16	0.63	6.7	0.26	28	1.1	0.5	0.02	-	-	0.0756	0.167
	15.5 mm	10	0.39	15.5	0.61	21	0.83	60	2.36	33.5	1.32	21	0.83	16	0.63	6.7	0.26	28	1.1	0.5	0.02	-	-	0.0825	0.182
	20 mm	15	0.59	20	0.79	21	0.83	60	2.36	34	1.34	21.5	0.85	15.5	0.61	6.8	0.27	28	1.1	0.5	0.02	-	-	0.0854	0.188
1"	25.5 mm	20.5	0.81	25.5	1	21	0.83	60	2.36	34	1.34	22	0.87	16	0.63	6.8	0.27	28	1.1	0.5	0.02	-	-	0.084	0.185
	20 mm	15	0.59	20	0.79	26	1.02	69	2.72	39.5	1.56	18.5	0.73	18	0.71	7.9	0.31	37	1.46	0.5	0.02	-	-	0.143	0.315
	25.5 mm	20	0.79	25.5	1	26.5	1.04	69	2.72	40	1.57	24	0.94	20	0.79	8	0.31	35	1.38	0.5	0.02	-	-	-	-
	28 mm	22	0.87	28	1.1	26	1.02	69	2.72	39	1.54	21	0.83	19	0.75	7.8	0.31	37	1.46	0.5	0.02	-	-	-	-
1-1/4"	32.5 mm	27	1.06	32.5	1.28	26	1.02	69	2.72	39.5	1.56	24.5	0.96	18.5	0.73	7.9	0.31	36.5	1.44	0.5	0.02	-	-	0.155	0.342
	25.5 mm	20	0.79	25.5	1	39	1.54	80	3.15	47.5	1.87	28	1.1	22	0.87	9.2	0.36	50	1.97	0.5	0.02	0.5	0.02	0.264	0.582
1-1/2"	40 mm	33.3	1.31	40	1.57	39.5	1.56	80	3.15	47.5	1.87	28	1.1	22	0.87	9.2	0.36	50	1.97	0.5	0.02	0.5	0.02	0.283	0.624
	51.5 mm	44	1.73	51.5	2.03	51.5	2.03	87.5	3.44	53.5	2.11	28	1.1	22.5	0.89	10.4	0.41	61.5	2.42	0.5	0.02	0.5	0.02	0.44	0.97
2-1/2" (NPT)	63.5 mm	54	2.13	63.5	2.5	66.5	2.62	107	4.21	65	2.56	34	1.34	29	1.14	12.7	0.5	79	3.11	0.5	0.02	0.5	0.02	-	-
2-1/2" (PS)	63.5 mm	54	2.13	63.5	2.5	66.5	2.62	107	4.21	65	2.56	34.5	1.36	29.5	1.16	12.7	0.5	79	3.11	0.5	0.02	0.5	0.02	0.82	1.808
3"	76.5 mm	68	2.68	76.5	3.01	78.5	3.09	110	4.33	68	2.68	33.5	1.32	27	1.06	13.3	0.52	91.5	3.6	0.5	0.02	0.5	0.02	0.962	2.121
4"	102 mm	91.7	3.61	102	4.02	101.5	4	120.5	4.74	74	2.91	38.5	1.52	30.5	1.2	14.5	0.57	117	4.61	0.5	0.02	0.5	0.02	1.667	3.675

Tolerance: $\pm 0.5\text{mm}$ (1/8"~2")
 $\pm 0.8\text{mm}$ (2-1/2"~4")

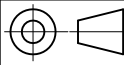
△			
△			
△			
Revise	Description	Date	Approve
DRAWING NO.		-14	

HAITIMA CORPORATION
 P.O.BOX 34-36 TAIPEI
 Tel:+886-2-26585800
 E-mail:haitima@seed.net.tw
 www.haitima.com.tw
 Taiwan R.O.C.
 Fax:+886-2-26582266



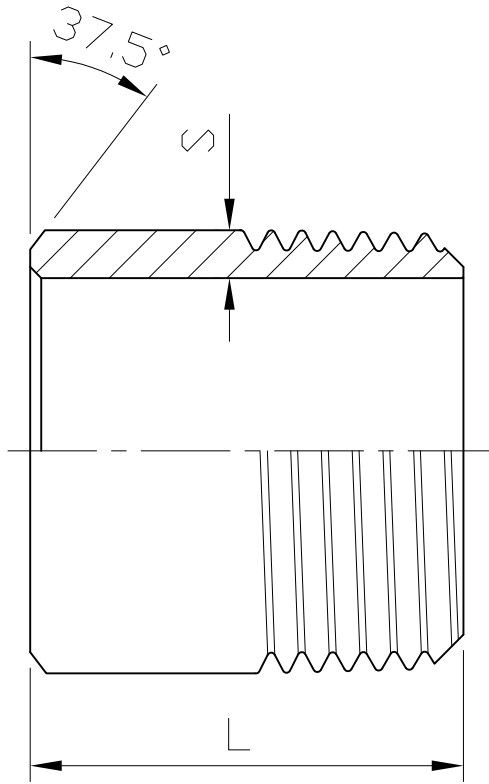
HAITIMA CORPORATION

CHECK BY	DRAWING BY	DATE	SPECIFICATION
	<i>Sammy</i>	Aug.06.2014	HOSE NIPPLE
			MATERIAL
			304/316
			PROCESS/Nr.
			UNIT / SCALE
			mm



F08

WELDING NIPPLE



Ra	0.2	▽▽▽▽
1.6	▽▽	▽▽▽▽
6.3	▽▽	▽▽
25	▽	▽
Q	~	~

GENERAL TOLERANCE	± 0.1
05-5	± 0.2
6-30	± 0.3
31-120	± 0.5
121-320	± 0.8
321-1000	± 1.0

HAITIMA CORPORATION
 P.O.BOX 34-36 TAIPEI
 Tel:+886-2-26585800
 E-mail:haitima@seed.net.tw
 TAIWAN R.O.C. www.haitima.com.tw
 Fax:+886-2-26582266

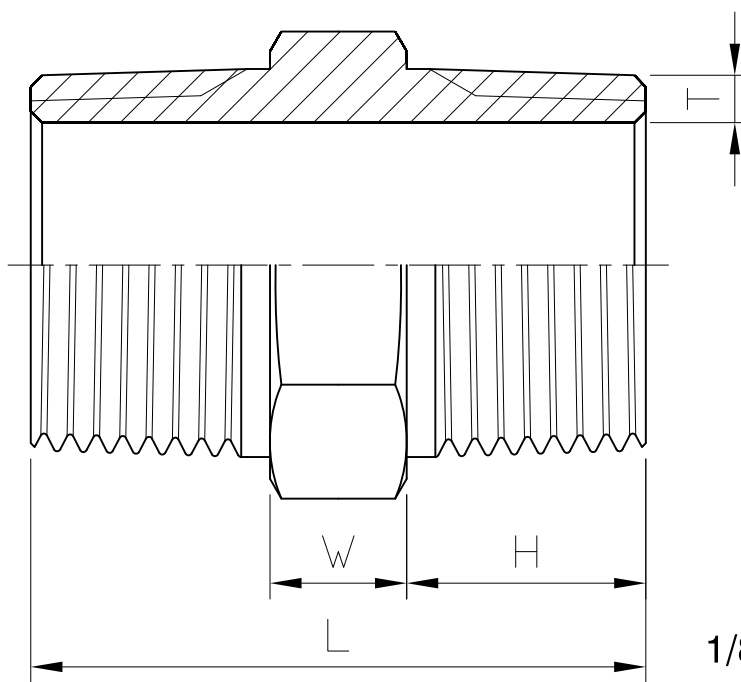
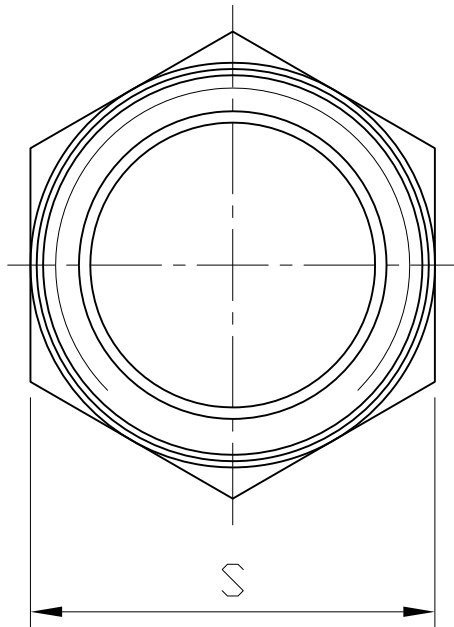
SIZE	1/8"		1/4"		3/8"		1/2"		3/4"		1"		1-1/4"		1-1/2"		2"		2-1/2"		3"		4"	
	mm	in	mm	in	mm	in	mm	in	mm	in	mm	in	mm	in	mm	in	mm	in	mm	in	mm	in	mm	in
S	1.7	0.07	2	0.08	2	0.08	2.5	0.1	2.5	0.1	3.2	0.13	3.2	0.13	3.2	0.13	3.6	0.14	3.6	0.14	4	0.16	4.5	0.18
L	30	1.18	30	1.18	30	1.18	35	1.38	40	1.57	40	1.57	50	1.97	50	1.97	50	1.97	60	2.36	70	2.76	80	3.15
Weight	kg	lb	kg	lb	kg	lb	kg	lb	kg	lb	kg	lb	kg	lb	kg	lb	kg	lb	kg	lb	kg	lb	kg	lb
	0.009	0.02	0.016	0.035	0.02	0.044	0.035	0.077	0.057	0.126	0.081	0.179	0.13	0.287	0.159	0.351	0.186	0.41	0.538	1.186	0.618	1.362	1.046	2.306

Tolerance: ± 0.5mm(1/8"~2")
 ± 0.8mm(2-1/2"~4")

△			
△			
△			
Revise	Description	Date	Approve
DRAWING NO. F09		-13	

HAITIMA CORPORATION	CHECK BY	DRAWING BY	DATE	SPECIFICATION	Welding Nipple
		<i>Louis</i>	Nov.19.2013	MATERIAL	304/316
				PROCESS/Nr.	
			UNIT / SCALE	mm	

HEXAGON NIPPLE



1/8"~2" Hexagon
2-1/2"~4" Octagon

Ra	0.2	▽▽▽▽
	1.6	▽▽▽
	6.3	▽▽
	25	▽
	~	~

GENERAL TOLERANCE	0.5-5 ± 0.1
	6-30 ± 0.2
	31-120 ± 0.3
	121-320 ± 0.5
	321-1000 ± 0.8

E-mail: haitima@seed.net.tw
TAIWAN R.O.C. www.haitima.com.tw
Fax: +886-2-26582266

HAITIMA CORPORATION
P.O. BOX 34-36 TAIPEI
Tel: +886-2-26585800

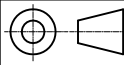
SIZE	1/8"		1/4"		3/8"		1/2"		3/4"		1"		1-1/4"		1-1/2"		2"		2-1/2"		3"		4"	
	mm	in	mm	in	mm	in	mm	in	mm	in	mm	in	mm	in	mm	in	mm	in	mm	in	mm	in	mm	in
W	5.7	0.22	6	0.24	6.1	0.24	7.6	0.3	8.4	0.33	8.3	0.33	10	0.39	10.2	0.4	10.6	0.42	13.1	0.52	13	0.51	14.5	0.57
H	12.2	0.48	13	0.51	13	0.51	17.2	0.68	17.6	0.69	20.4	0.8	20.8	0.82	20.7	0.81	22	0.87	25	0.98	27.5	1.08	30.3	1.19
S	13.3	0.52	15.2	0.6	18.5	0.73	23	0.91	29	1.14	35	1.38	44	1.73	50	1.97	62	2.44	78	3.07	91	3.58	117	4.61
L	30	1.18	32	1.26	32	1.26	42	1.65	43.5	1.71	49	1.93	51.5	2.03	51.5	2.03	54.5	2.15	63	2.48	68	2.68	75	2.95
T	1.5	0.06	1.6	0.06	1.7	0.07	1.8	0.07	1.8	0.07	2.1	0.08	2.5	0.1	2.4	0.09	2.6	0.1	3.1	0.12	3.5	0.14	4	0.16
Weight	kg	lb	kg	lb	kg	lb	kg	lb	kg	lb	kg	lb	kg	lb	kg	lb	kg	lb	kg	lb	kg	lb	kg	lb
	0.015	0.033	0.023	0.051	0.028	0.062	0.047	0.104	0.073	0.161	0.11	0.243	0.169	0.373	0.207	0.456	0.305	0.672	0.59	1.3	0.636	1.402	1.143	2.52

Tolerance: ± 0.5mm(1/8"~2")
± 0.8mm(2-1/2"~4")

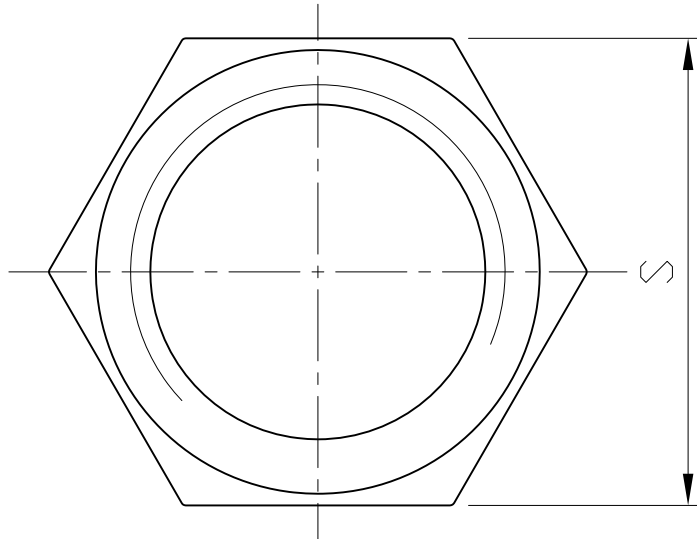
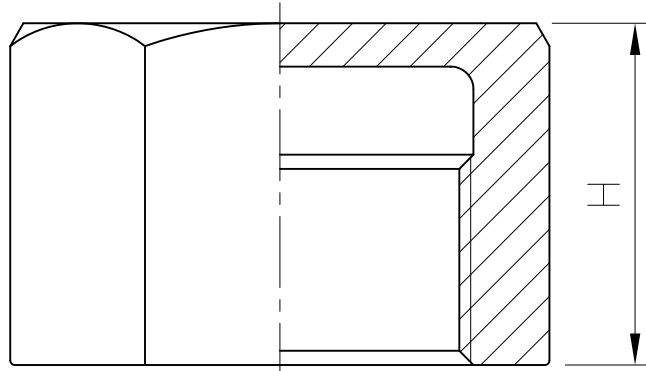
△			
△			
△			
Revise	Description	Date	Approve
DRAWING NO. F06		-14	



CHECK BY	DRAWING BY	DATE	SPECIFICATION
	<i>Sammy</i>	Dec.08.2014	Hexagon Nipple
			MATERIAL 304/316
			PROCESS/Nr.
			UNIT / SCALE mm



HEXAGON CAP



SIZE	H		S		Weight	
	mm	in	mm	in	kg	lb
1/8"	15.5	0.61	14.2	0.56	0.015	0.033
1/4"	17	0.67	17.5	0.69	0.022	0.049
3/8"	17.5	0.69	21.2	0.83	0.03	0.066
1/2"	20	0.79	25.5	1	0.04	0.088
3/4"	20.4	0.8	30.1	1.19	0.055	0.121
1"	27.1	1.07	37.4	1.47	0.1	0.22
1-1/4"	30	1.18	47	1.85	0.156	0.344
1-1/2"	30.3	1.19	53.2	2.09	0.188	0.414
2"	32.3	1.27	66	2.6	0.29	0.639
2-1/2"	35.2	1.39	81	3.19	0.57	1.257
3"	38.4	1.51	95.8	3.77	0.68	1.499
4"	41	1.61	122.2	4.81	1.22	2.69

Tolerance: $\pm 0.5\text{mm}(1/8''\sim 2'')$
 $\pm 0.8\text{mm}(2-1/2''\sim 4'')$

Ra
0.2
1.6
6.3
25

± 0.1
± 0.2
± 0.3
± 0.5
± 0.8

0.5-5
6-30
31-120
121-320
321-1000

GENERAL TOLERANCE

HAITIMA CORPORATION
 P.O.BOX 34-36 TAIPEI
 Tel:+886-2-26585800

E-mail:haitima@seednet.tw
 TAIWAN R.O.C. www.haitima.com.tw
 Fax:+886-2-26582266



HAITIMA CORPORATION

CHECK BY	DRAWING BY	DATE	SPECIFICATION	Hexagon Cap
	<i>Sammy</i>	Dec.08.2014	MATERIAL	304/316
			PROCESS/Nr.	
			UNIT / SCALE	mm

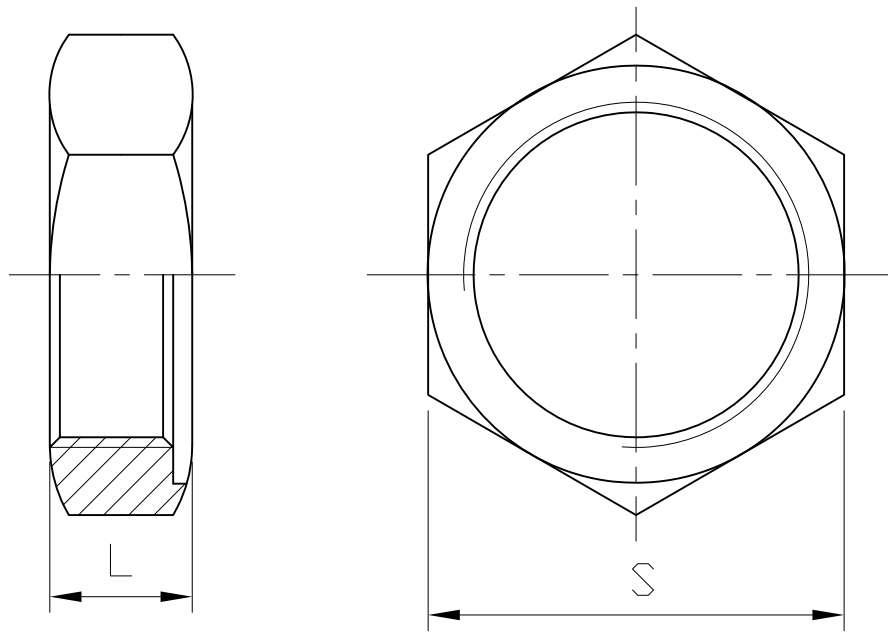
△			
△			
△			
Revise	Description	Date	Approve
DRAWING NO. F13		-14	

HEXAGON NUT

Ra	0.2	▽▽▽▽
1.6	▽▽	▽▽▽▽
6.3	▽	▽▽
25	▽	▽
Q	~	

± 0.1	0.5-5
± 0.2	6-30
± 0.3	31-120
± 0.5	121-320
± 0.8	321-1000
GENERAL TOLERANCE	

HAITIMA CORPORATION
 P.O.BOX 34-36 TAIPEI
 Tel:+886-2-26585800
 E-mail:haitima@seednet.tw
 TAIWAN R.O.C. www.haitima.com.tw
 F.o.x:+886-2-26582266



SIZE	L		S		Weight	
	mm	in	mm	in	kg	lb
1/8"	6.3	0.25	17.3	0.68	0.008	0.018
1/4"	7	0.28	19.1	0.75	0.009	0.02
3/8"	7.5	0.3	25.3	1	0.018	0.04
1/2"	7.7	0.3	30.1	1.19	0.024	0.053
3/4"	9.2	0.36	34.4	1.35	0.031	0.068
1"	9	0.35	43.2	1.7	0.048	0.106
1-1/4"	11.7	0.46	52	2.05	0.083	0.183
1-1/2"	11.8	0.46	58.1	2.29	0.097	0.214
2"	13.1	0.52	71.9	2.83	0.157	0.346
2-1/2"	14.8	0.58	90.4	3.56	0.31	0.683
3"	17	0.67	103	4.06	0.374	0.825
4"	18	0.71	128	5.04	0.538	1.186

Tolerance: ± 0.5mm(1/8"~2")
 ± 0.8mm(2-1/2"~4")

△			
△			
△			
Revise	Description	Date	Approve
DRAWING NO. F15		-14	



CHECK BY	DRAWING BY	DATE	SPECIFICATION	Hexagon Nut
	<i>Sammy</i>	Dec.08.2014	MATERIAL	304/316
			PROCESS/Nr.	
			UNIT / SCALE	mm

