

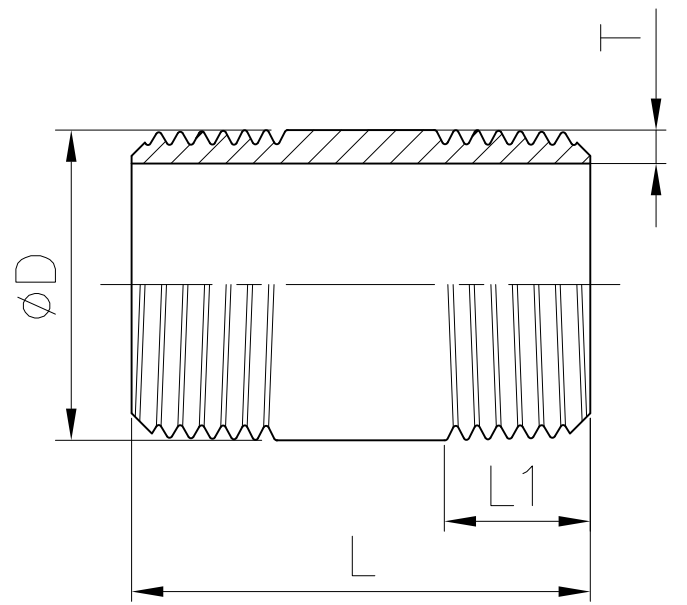
GENERAL TOLERANCE

± 0.1	0.5~5	▽	0.2	▽	▽
± 0.2	6~30	▽	1.6	▽	▽
± 0.3	31~120	▽	6.3	▽	▽
± 0.5	121~320	▽	25	▽	▽
± 0.8	321~1000	▽	▽	▽	▽

Ra

JIS

HAITIMA CORPORATION
 P.O.BOX 34-36 TAIPEI TAIWAN R.O.C.
 Tel:+886-2-26585800 Fax:+886-2-26582266
 E-mail:haitima@seed.net.tw www.haitima.com.tw



DN	L±1																
	Full Thread (Close)	1-1/2"	2"	2-1/2"	3"	3-1/2"	4"	4-1/2"	5"	5-1/2"	6"	7"	8"	9"	10"	11"	12"
1/8"	19	38.1	50.8	63.5	76.2	88.9	101.6	114.3	127	139.7	152.4	177.8	203.2	228.6	254	279.4	304.8
1/4"	22	38.1	50.8	63.5	76.2	88.9	101.6	114.3	127	139.7	152.4	177.8	203.2	228.6	254	279.4	304.8
3/8"	25.4	38.1	50.8	63.5	76.2	88.9	101.6	114.3	127	139.7	152.4	177.8	203.2	228.6	254	279.4	304.8
1/2"	28.57	38.1	50.8	63.5	76.2	88.9	101.6	114.3	127	139.7	152.4	177.8	203.2	228.6	254	279.4	304.8
3/4"	34.9	38.1	50.8	63.5	76.2	88.9	101.6	114.3	127	139.7	152.4	177.8	203.2	228.6	254	279.4	304.8
1"	38.1	-	50.8	63.5	76.2	88.9	101.6	114.3	127	139.7	152.4	177.8	203.2	228.6	254	279.4	304.8
1-1/4"	41.27	-	50.8	63.5	76.2	88.9	101.6	114.3	127	139.7	152.4	177.8	203.2	228.6	254	279.4	304.8
1-1/2"	44.45	-	50.8	63.5	76.2	88.9	101.6	114.3	127	139.7	152.4	177.8	203.2	228.6	254	279.4	304.8
2"	50.8	-	-	63.5	76.2	88.9	101.6	114.3	127	139.7	152.4	177.8	203.2	228.6	254	279.4	304.8
2-1/2"	63.5	-	-	-	76.2	88.9	101.6	114.3	127	139.7	152.4	177.8	203.2	228.6	254	279.4	304.8
3"	66.6	-	-	-	76.2	88.9	101.6	114.3	127	139.7	152.4	177.8	203.2	228.6	254	279.4	304.8
4"	73	-	-	-	76.2	88.9	101.6	114.3	127	139.7	152.4	177.8	203.2	228.6	254	279.4	304.8
5"	79.4	-	-	-	-	-	-	-	127	-	152.4	-	203.2	-	254	-	304.8
6"	79.4	-	-	-	-	-	-	-	127	-	152.4	-	203.2	-	254	-	304.8

NPS	L±1																
	Full Thread (Close)	1-1/2"	2"	2-1/2"	3"	3-1/2"	4"	4-1/2"	5"	5-1/2"	6"	7"	8"	9"	10"	11"	12"
1/8"	0.75	1.5	2	2.5	3	3.5	4	4.5	5	5.5	6	7	8	9	10	11	12
1/4"	0.87	1.5	2	2.5	3	3.5	4	4.5	5	5.5	6	7	8	9	10	11	12
3/8"	1	1.5	2	2.5	3	3.5	4	4.5	5	5.5	6	7	8	9	10	11	12
1/2"	1.12	1.5	2	2.5	3	3.5	4	4.5	5	5.5	6	7	8	9	10	11	12
3/4"	1.37	1.5	2	2.5	3	3.5	4	4.5	5	5.5	6	7	8	9	10	11	12
1"	1.5	-	2	2.5	3	3.5	4	4.5	5	5.5	6	7	8	9	10	11	12
1-1/4"	1.62	-	2	2.5	3	3.5	4	4.5	5	5.5	6	7	8	9	10	11	12
1-1/2"	1.75	-	2	2.5	3	3.5	4	4.5	5	5.5	6	7	8	9	10	11	12
2"	2	-	-	2.5	3	3.5	4	4.5	5	5.5	6	7	8	9	10	11	12
2-1/2"	2.5	-	-	-	3	3.5	4	4.5	5	5.5	6	7	8	9	10	11	12
3"	2.62	-	-	-	3	3.5	4	4.5	5	5.5	6	7	8	9	10	11	12
4"	2.87	-	-	-	3	3.5	4	4.5	5	5.5	6	7	8	9	10	11	12
5"	3.13	-	-	-	-	-	-	-	5	-	6	-	8	-	10	-	12
6"	3.13	-	-	-	-	-	-	-	5	-	6	-	8	-	10	-	12

Nominal Pipe (DN)	Outside Dia. (D)	Thread Dia. (L1)	Wall Thickness (T)
1/8"	10.29±0.4	8.1	1.73±0.22
1/4"	13.71±0.4	12.3	2.24±0.28
3/8"	17.14±0.4	12.4	2.31±0.29
1/2"	21.34±0.4	16.2	2.77±0.35
3/4"	26.67±0.4	16.5	2.87±0.36
1"	33.4±0.4	20.6	3.38±0.42
1-1/4"	42.16±0.4	21.2	3.56±0.44
1-1/2"	48.26±0.4	21.6	3.68±0.46
2"	60.33±0.8	22.5	3.91±0.49
2-1/2"	73 / 76±0.8	33.6	5.16±0.65
3"	88.9±0.8	35.2	5.49±0.69
4"	114.3±0.8	37.7	6.02±0.75
5"	141.3±0.8	42	6.55±0.81
6"	168.28 ^{+1.6} _{-0.8}	42	7.11±0.89

unit:mm

Nominal Pipe (NPS)	Outside Dia. (D)	Thread Dia. (L1)	Wall Thickness (T)
1/8"	0.41±0.02	0.32	0.07±0.01
1/4"	0.54±0.02	0.48	0.09±0.01
3/8"	0.67±0.02	0.49	0.09±0.01
1/2"	0.84±0.02	0.64	0.11±0.01
3/4"	1.05±0.02	0.65	0.11±0.01
1"	1.31±0.02	0.81	0.13±0.02
1-1/4"	1.66±0.02	0.83	0.14±0.02
1-1/2"	1.9±0.02	0.85	0.14±0.02
2"	2.38±0.03	0.89	0.15±0.02
2-1/2"	2.87 / 2.99±0.03	1.32	0.2±0.03
3"	3.5±0.03	1.39	0.22±0.03
4"	4.5±0.03	1.48	0.24±0.03
5"	5.56±0.03	1.65	0.26±0.03
6"	6.63 ^{+0.06} _{-0.03}	1.65	0.28±0.04

unit:in

HAITIMA CORPORATION

CHECK BY	DRAWING BY	DATE	SPECIFICATION	Barrel Nipple SCH40S
	<i>Yuan</i>	Sep.20.2019	MATERIAL	SS 316(L)/304(L)
			PROCESS/Nr.	
			UNIT / SCALE	mm

△			
△			
△			
Revise	Description	Date	Approve
DRAWING NO.		LF10-10-19	